



UIC SUSTAINABILITY
LOWNOISEPAD Annex A
Graphic Reference Guide for RFI

October 2023



INTERNATIONAL UNION
OF RAILWAYS

Citation style

International Union of Railways (UIC), Sustainability, *LOWNOISEPAD Annex A: Graphic Reference Guide for RFI*, 2023.

ISBN 978-2-7461-3335-8

Warning

No part of this publication may be copied, reproduced or distributed by any means whatsoever, including electronic, except for private and individual use, without the express permission of the International Union of Railways (UIC). The same applies for translation, adaptation or transformation, arrangement or reproduction by any method or procedure whatsoever. The sole exceptions - noting the author's name and the source - are "analyses and brief quotations justified by the critical, argumentative, educational, scientific or informative nature of the publication into which they are incorporated" (Articles L 122-4 and L122-5 of the French Intellectual Property Code).

© International Union of Railways (UIC) - Paris, 2023

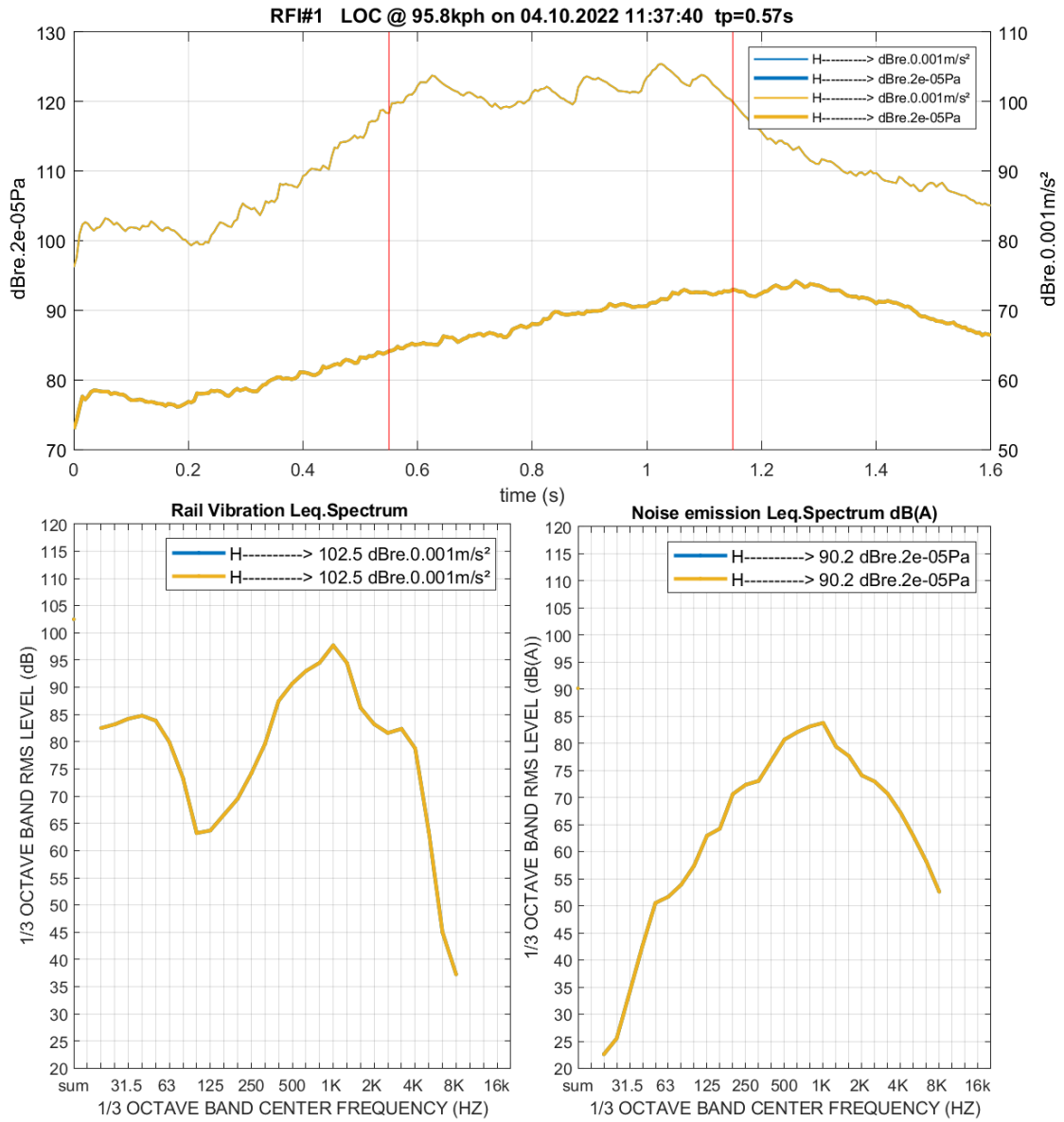
This annex, provided in a separate document, gives a detailed and graphic overview of the pass by data collected from each project member throughout the project. All results showing the noise reduction and detailed pass-by analysis, calculated on the basis of the data available in the LOWNOISEPAD software tool, are shown in a graph format for each type of rolling stock, given in an individual section for each PP (alongside Chapter 7 of this report). This annex should be used alongside the information gathered as part of the project carried out by UIC and the 12 project participants. It is not recommended to carry out analysis without first having reviewed the LOWNOISEPAD final report and the **Annex B**, and also without consulting and receiving authorisation from the project participants and UIC.

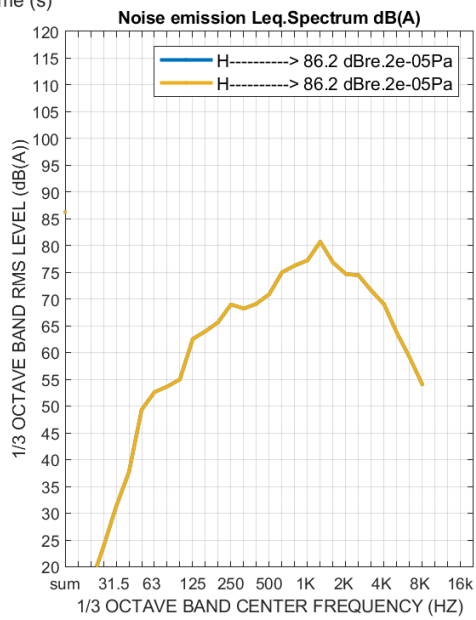
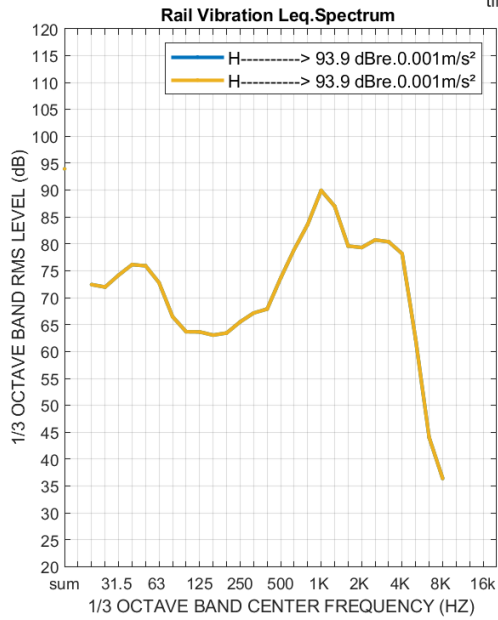
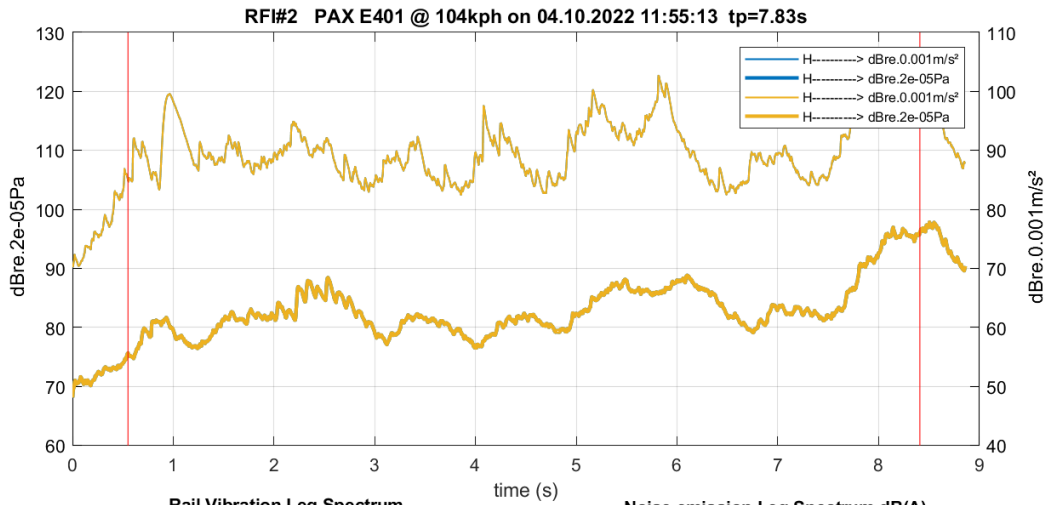


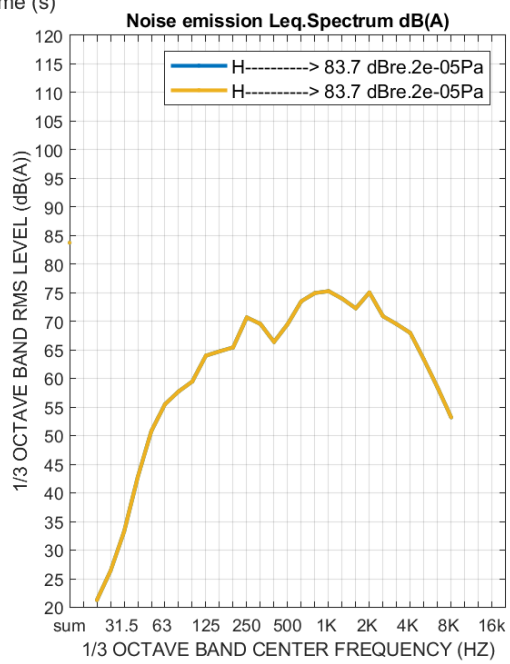
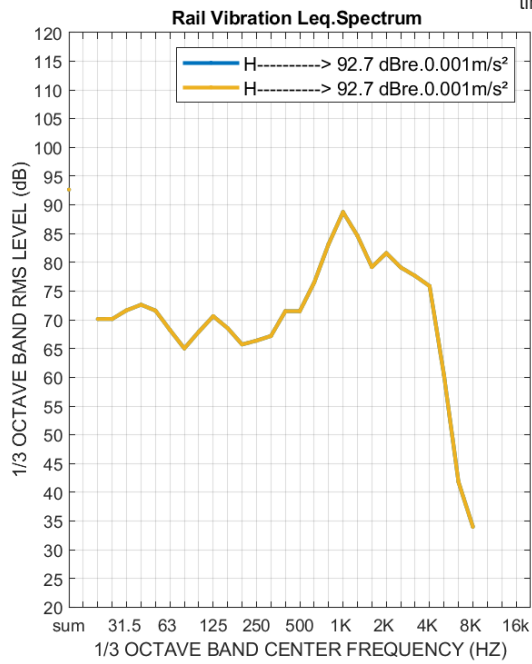
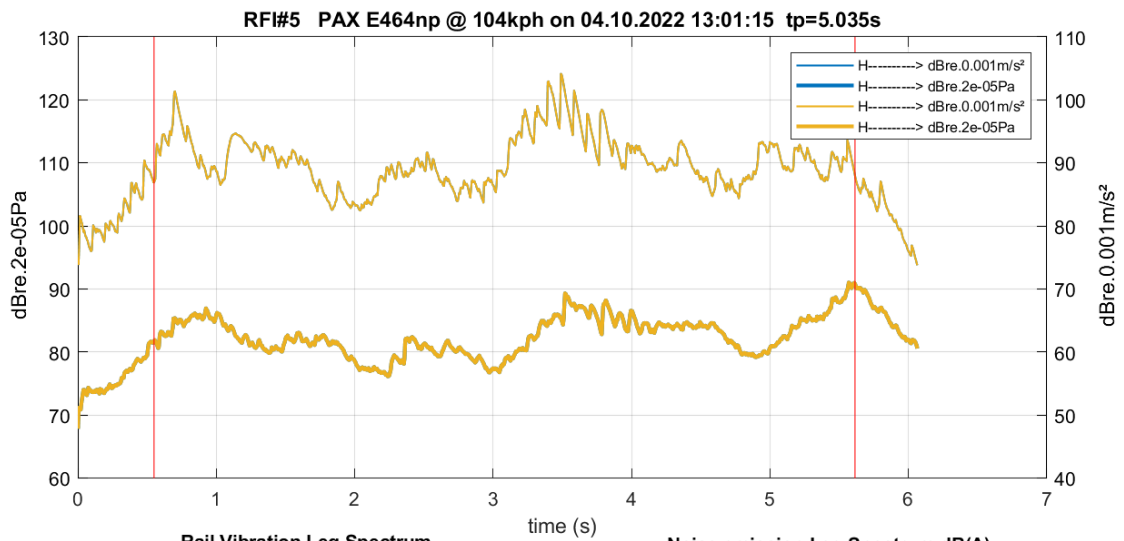
CONTENTS

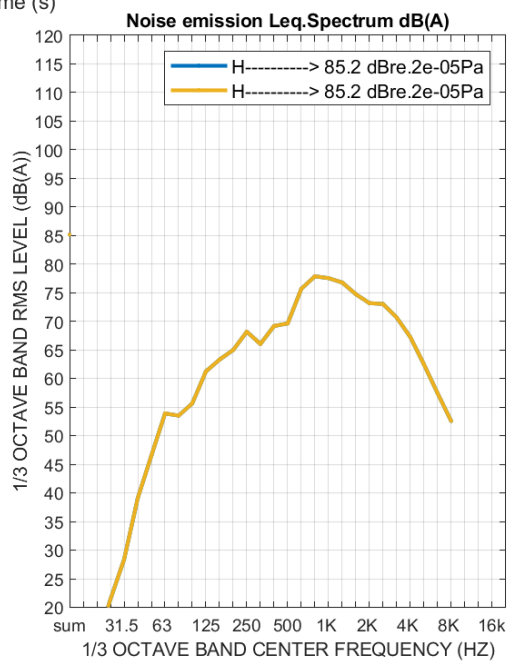
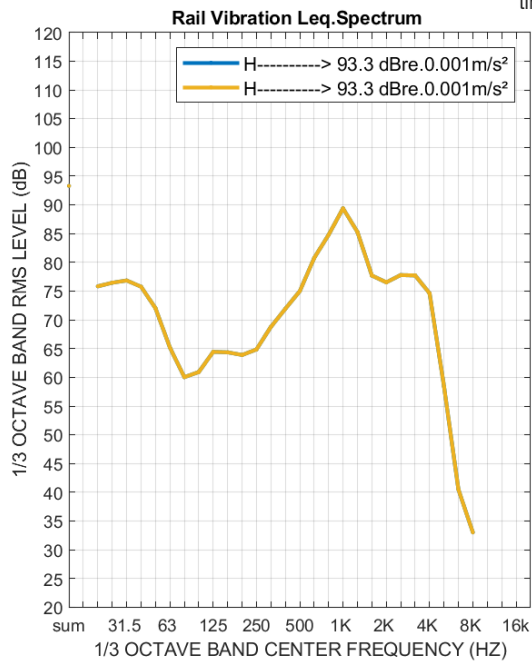
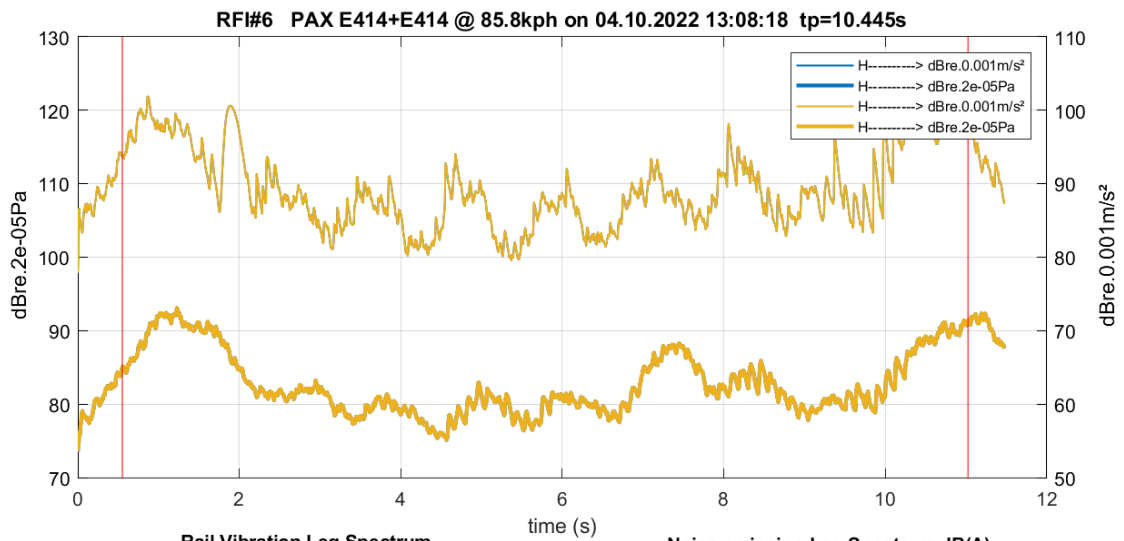
1. RFI, ITALY - DETAILED PASS-BY PLOTS 3

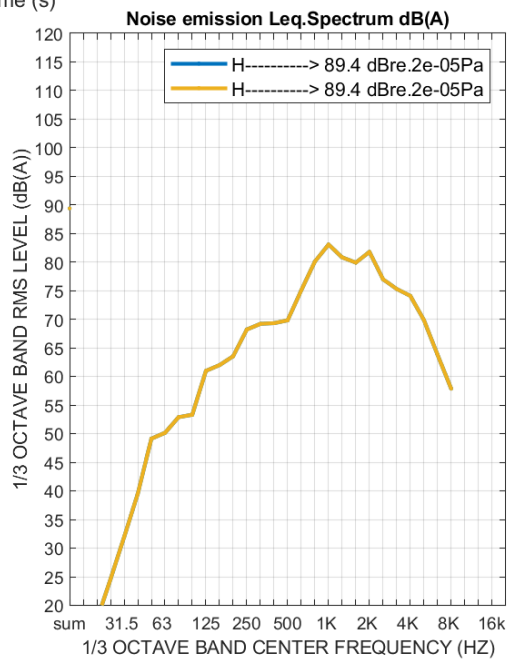
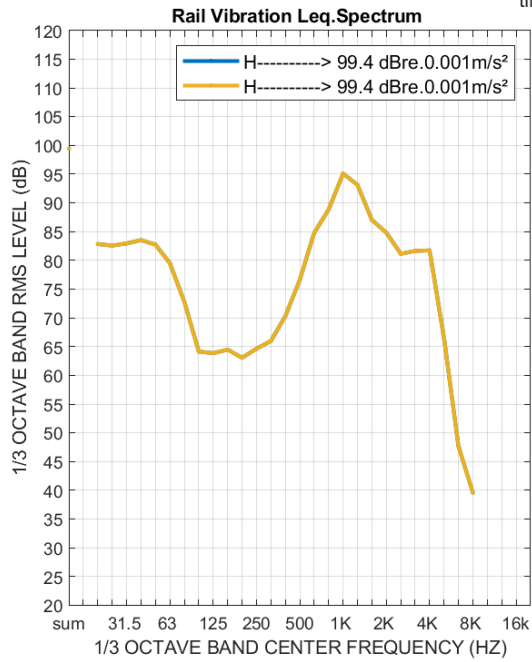
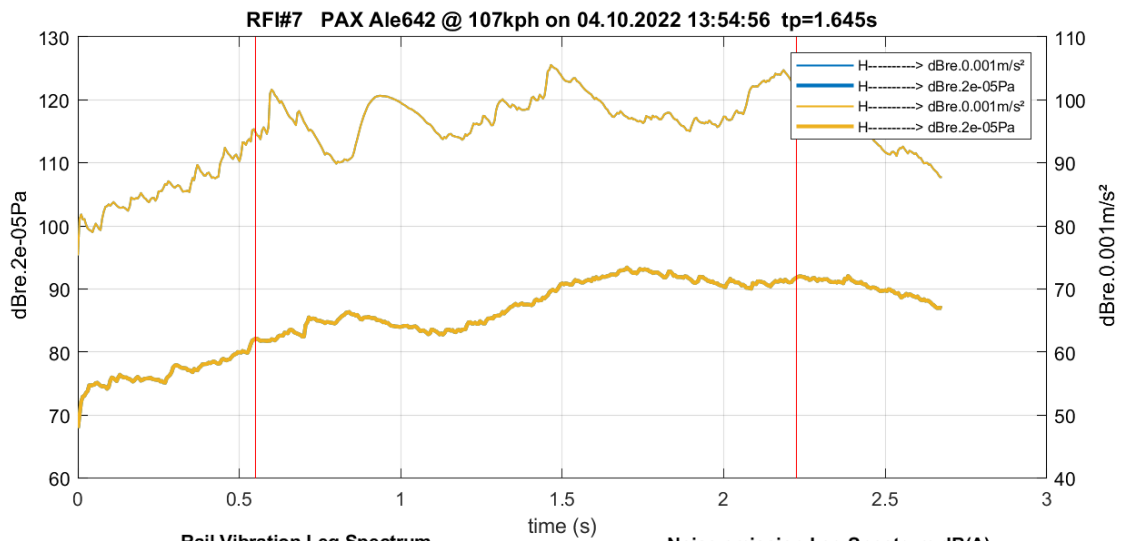
1. RFI, ITALY - DETAILED PASS-BY PLOTS

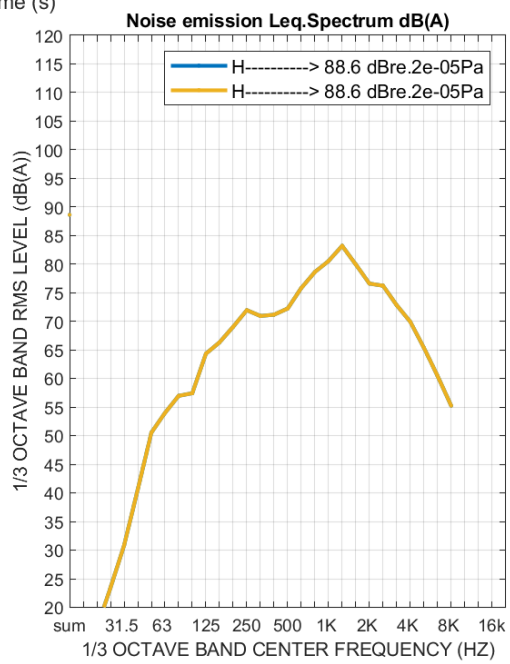
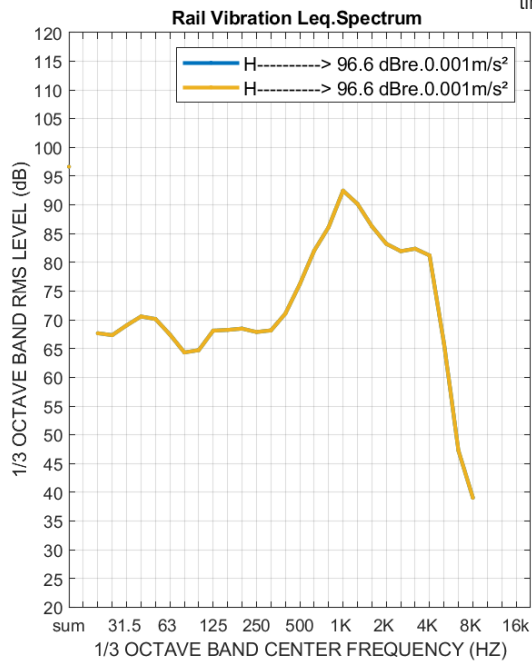
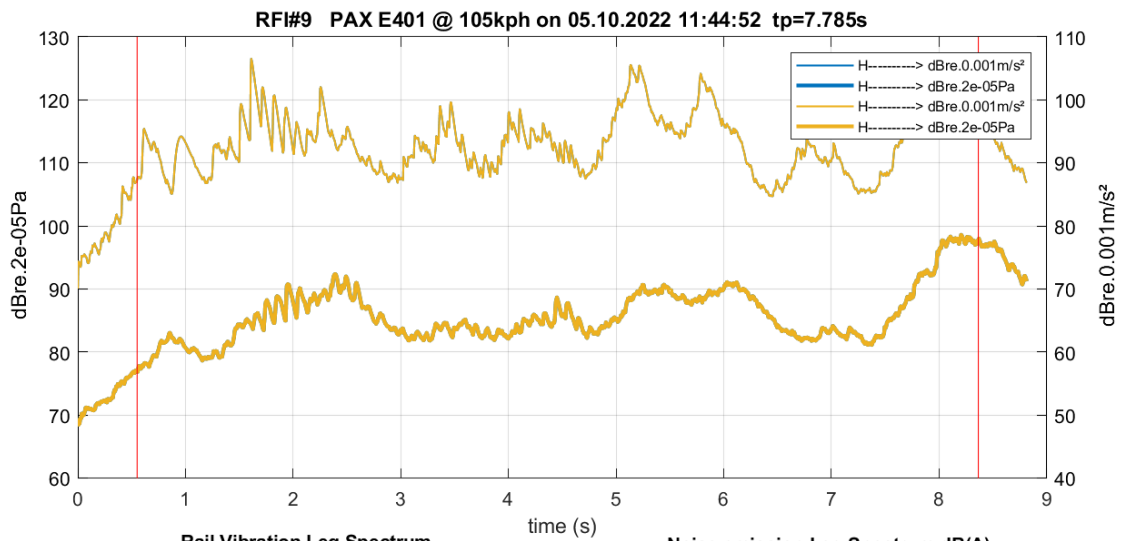


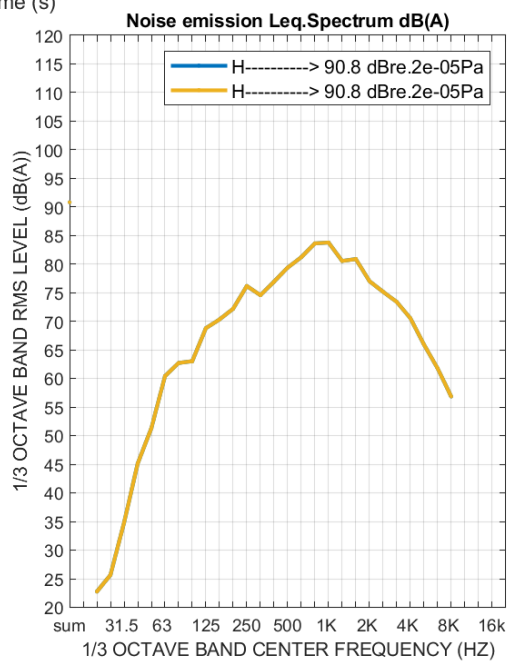
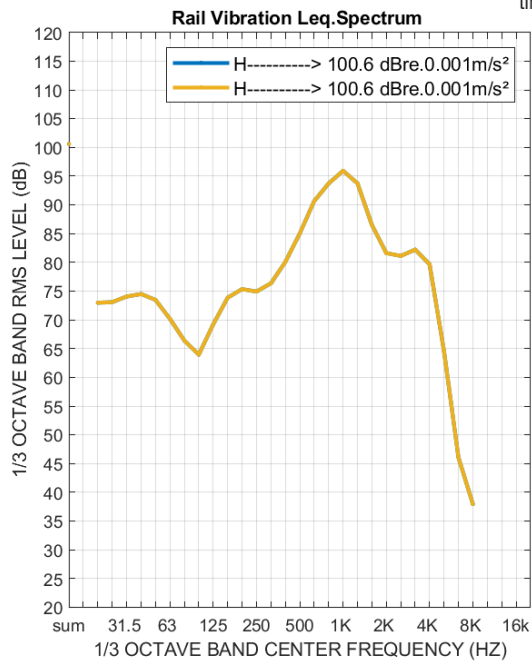
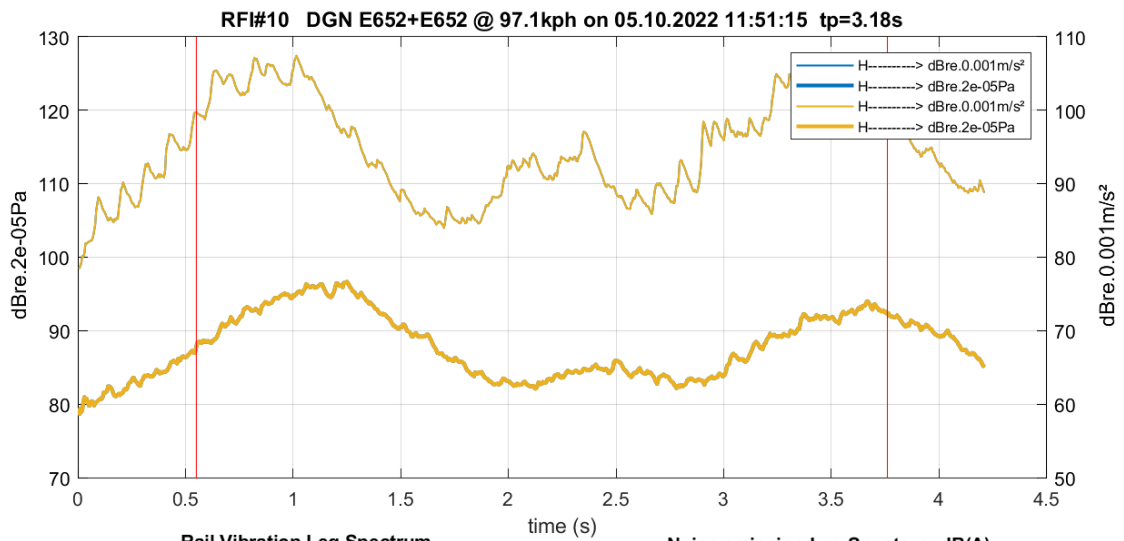


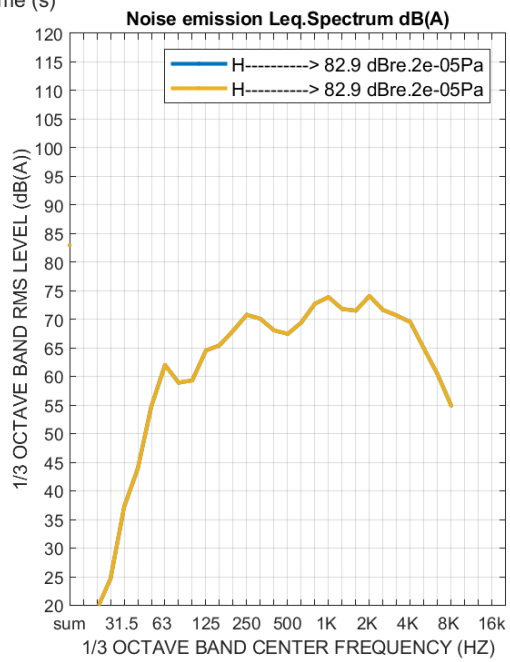
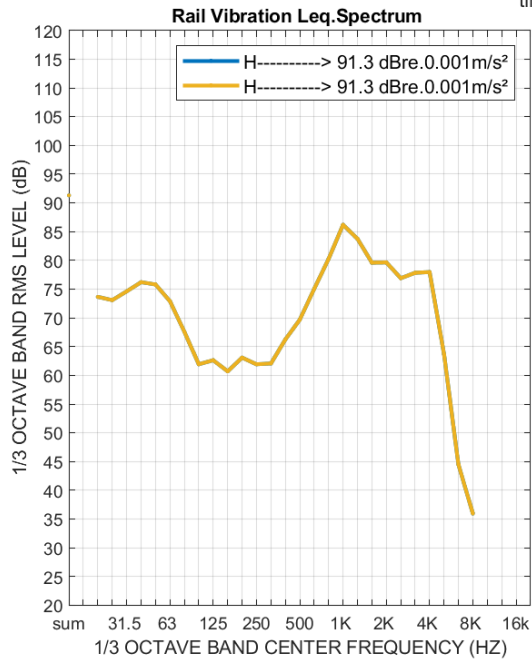
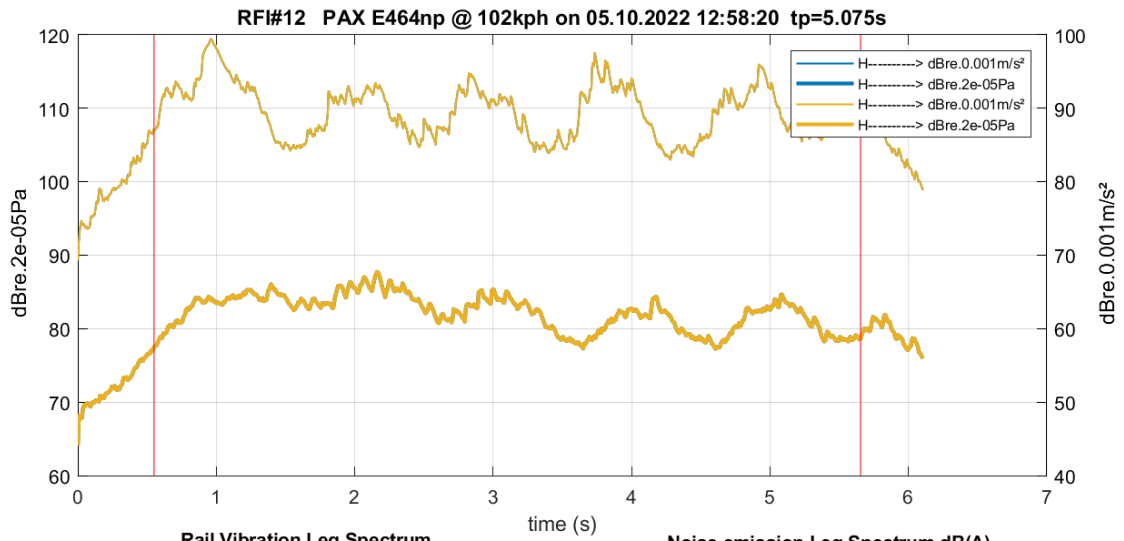


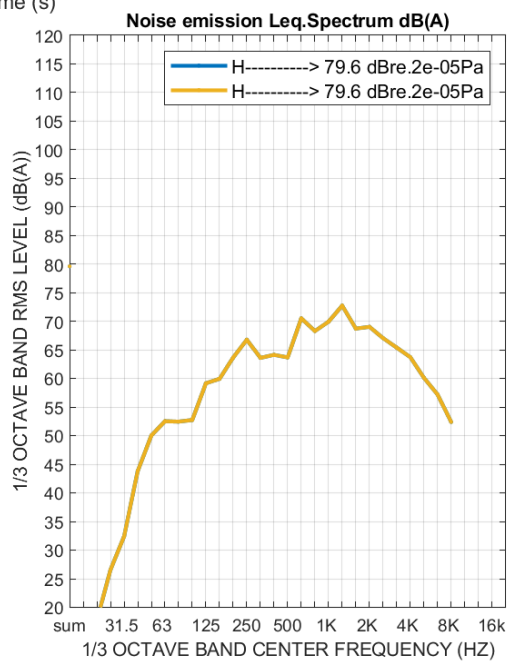
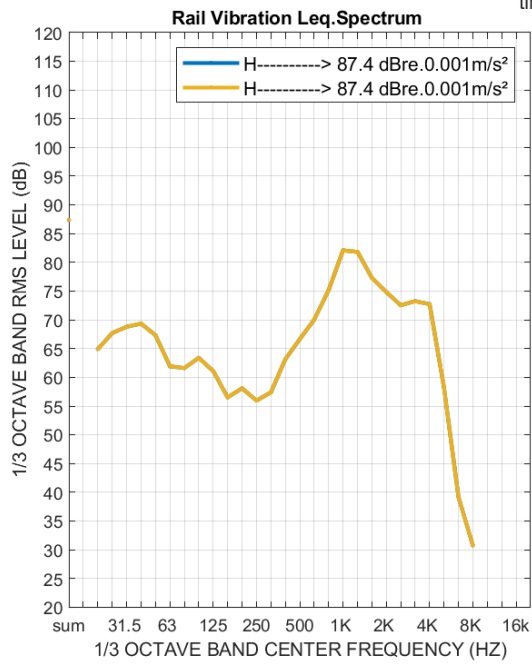
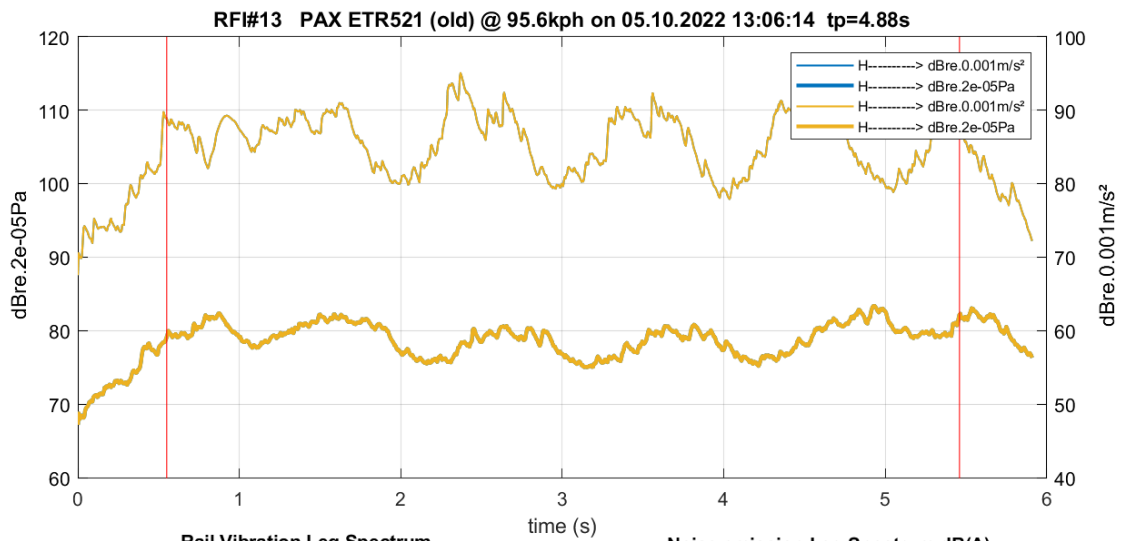


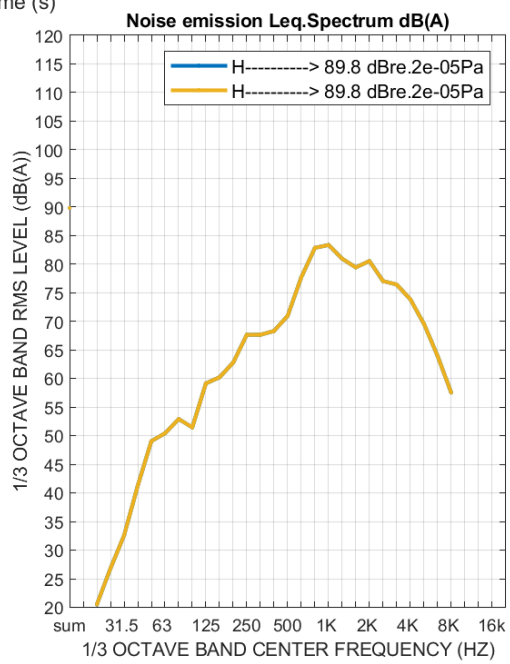
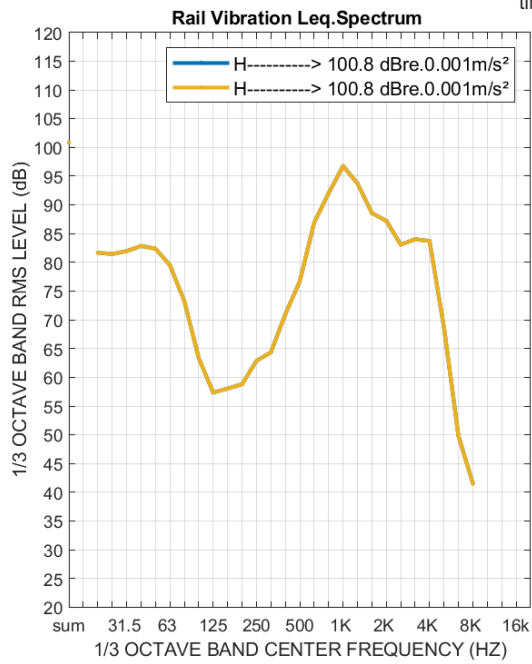
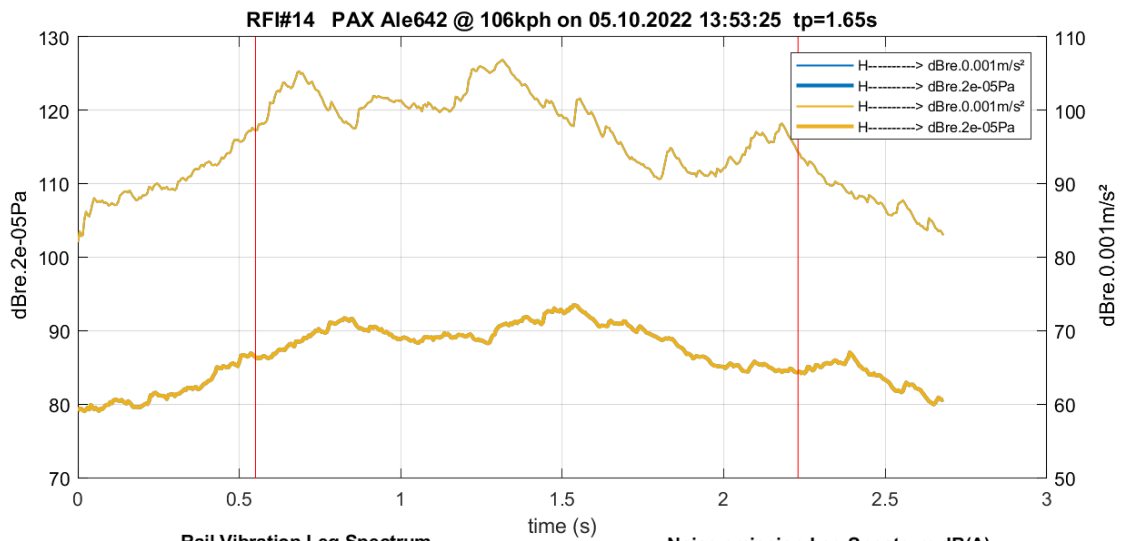


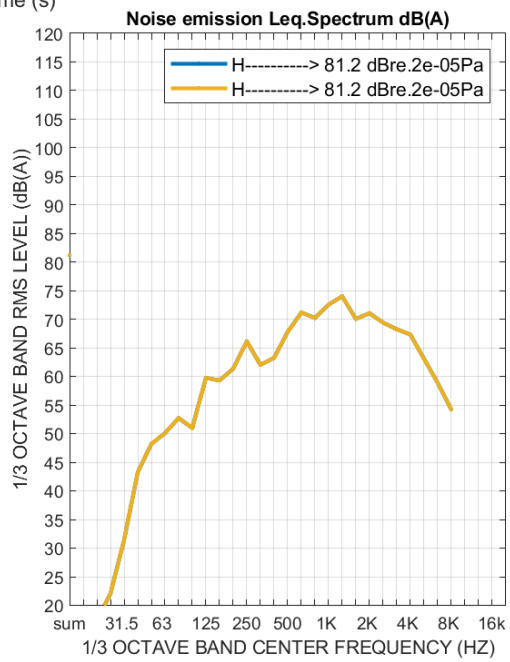
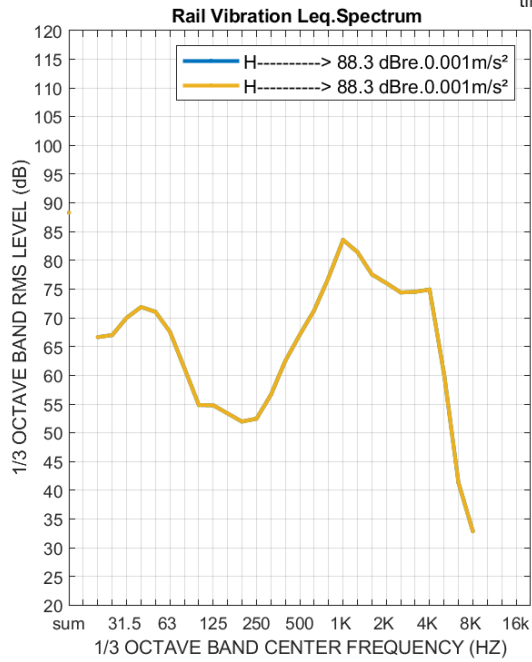
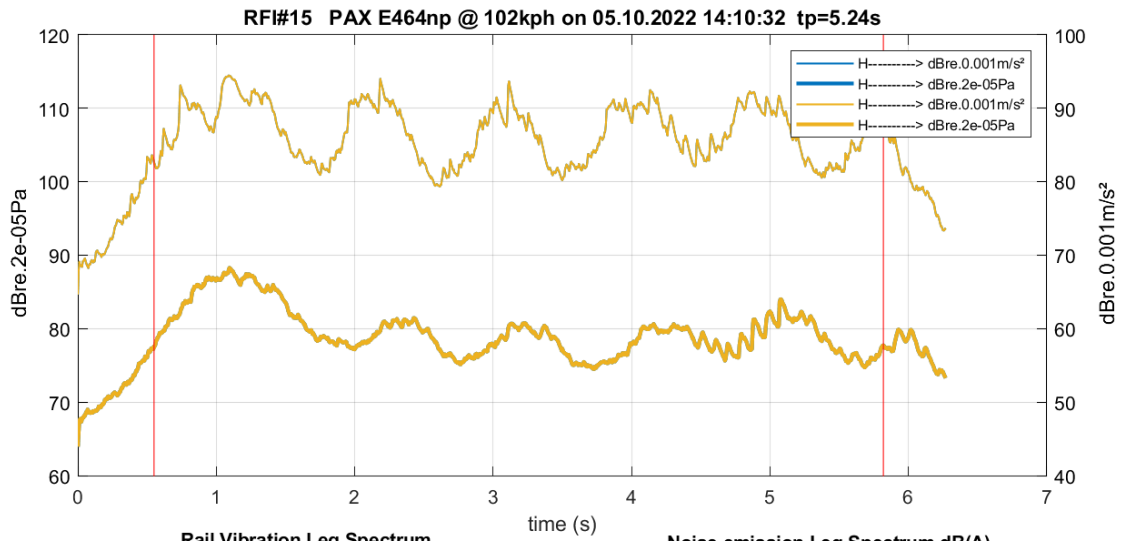


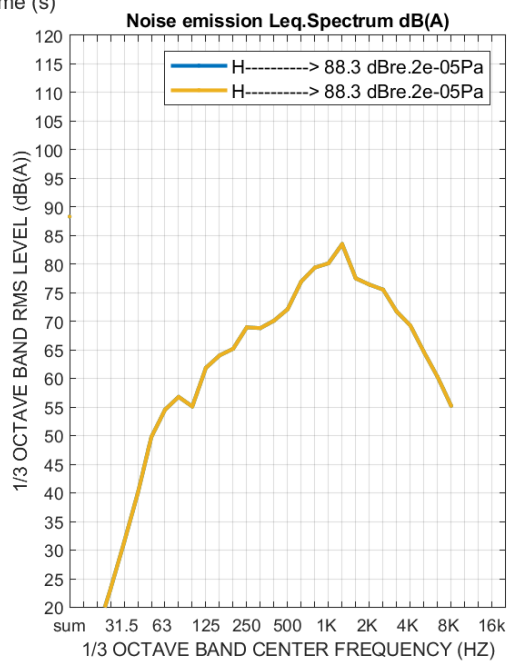
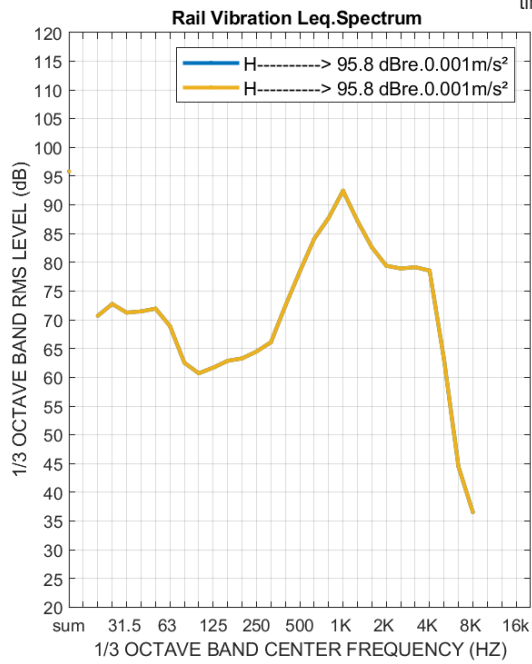
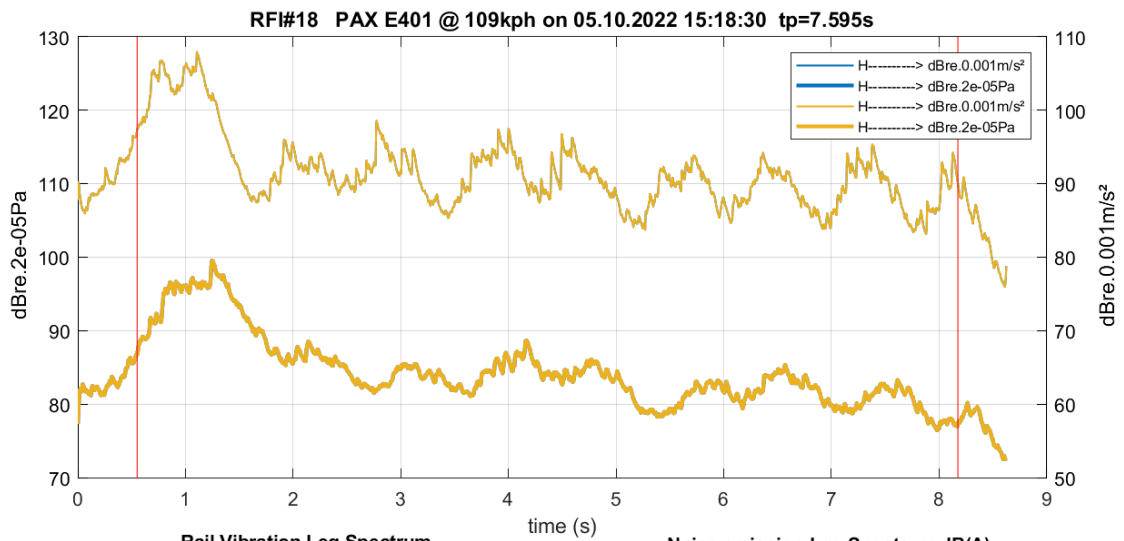


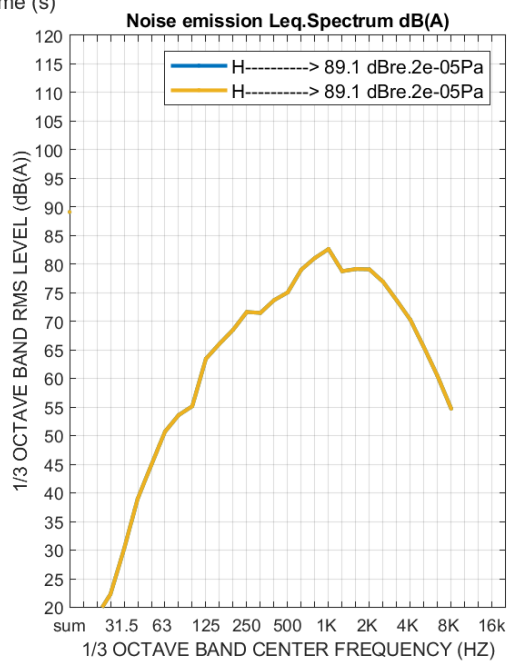
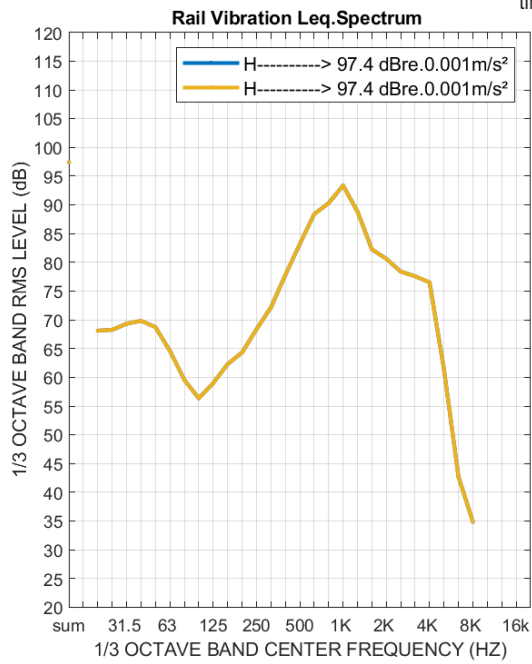
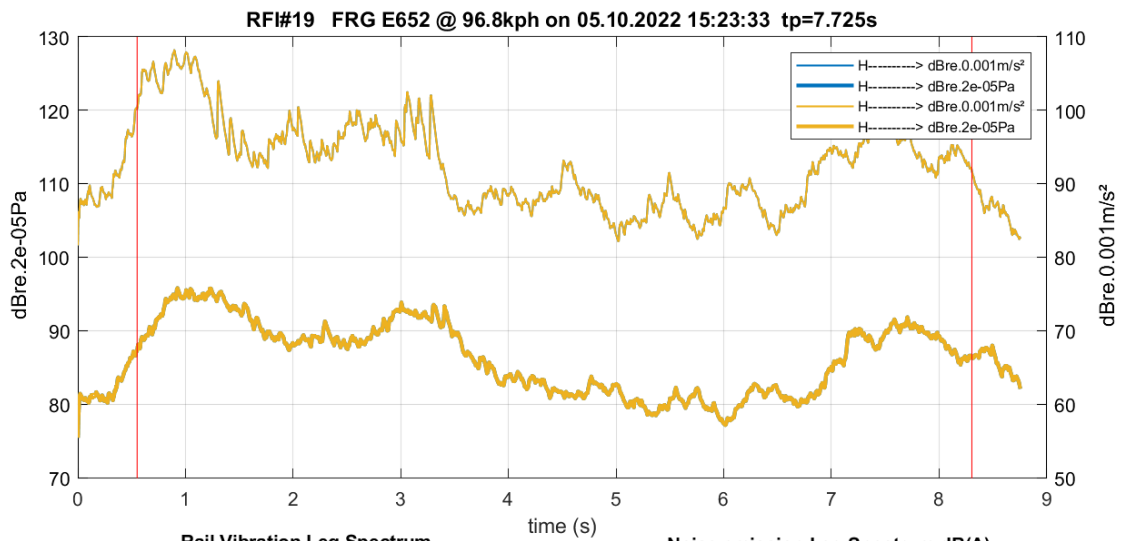


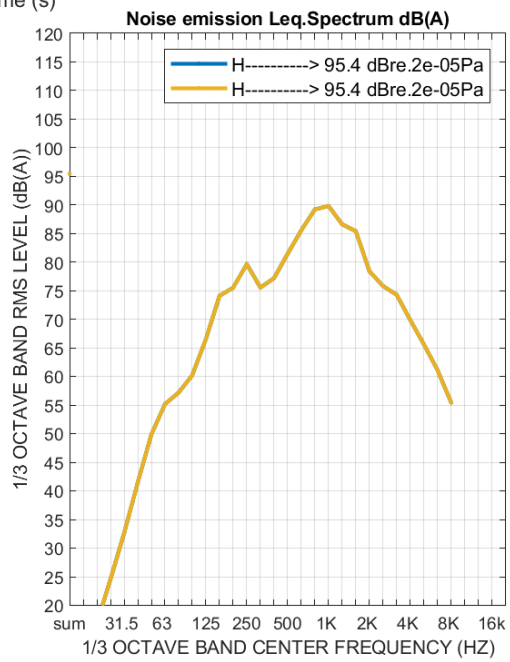
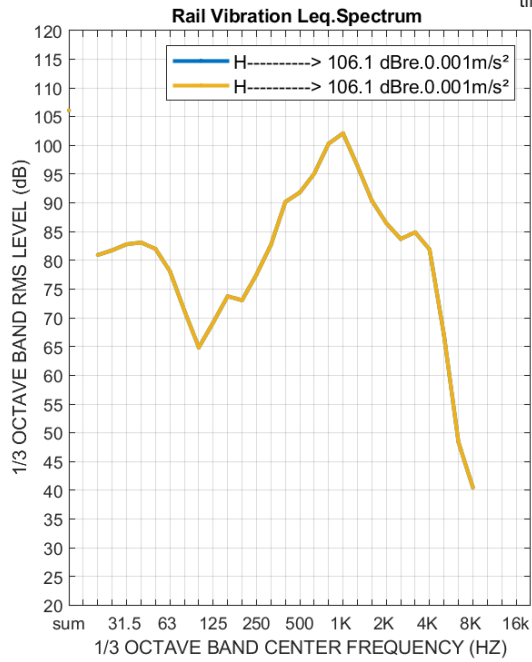
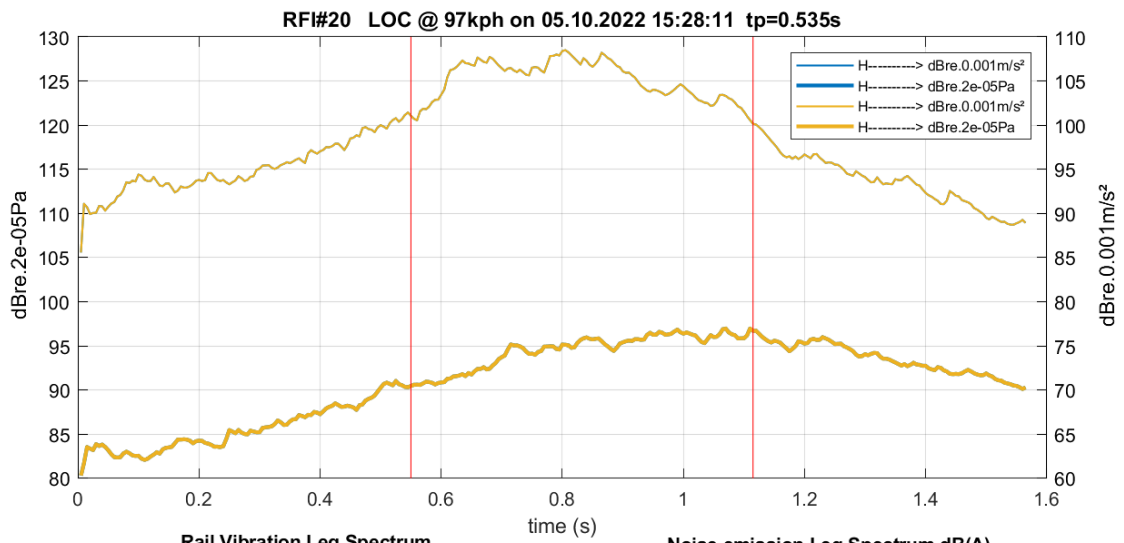


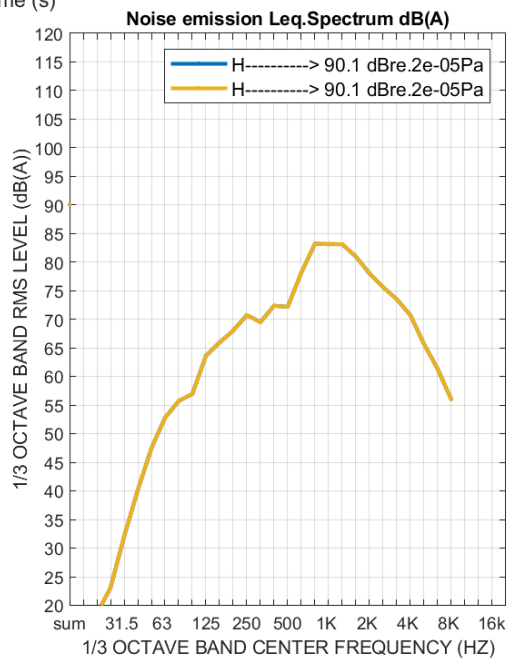
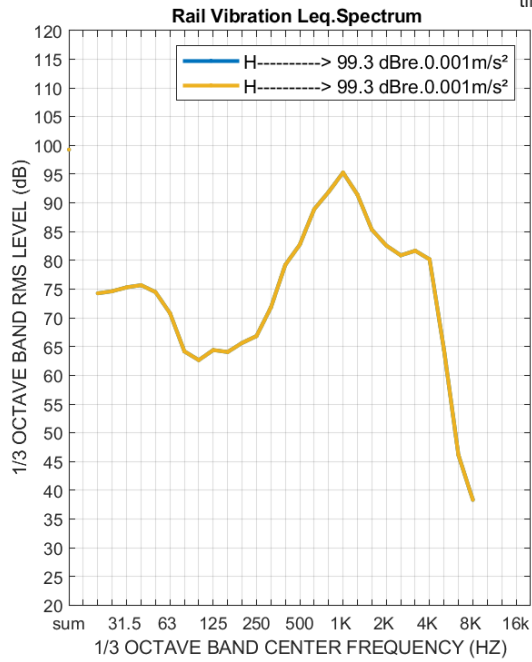
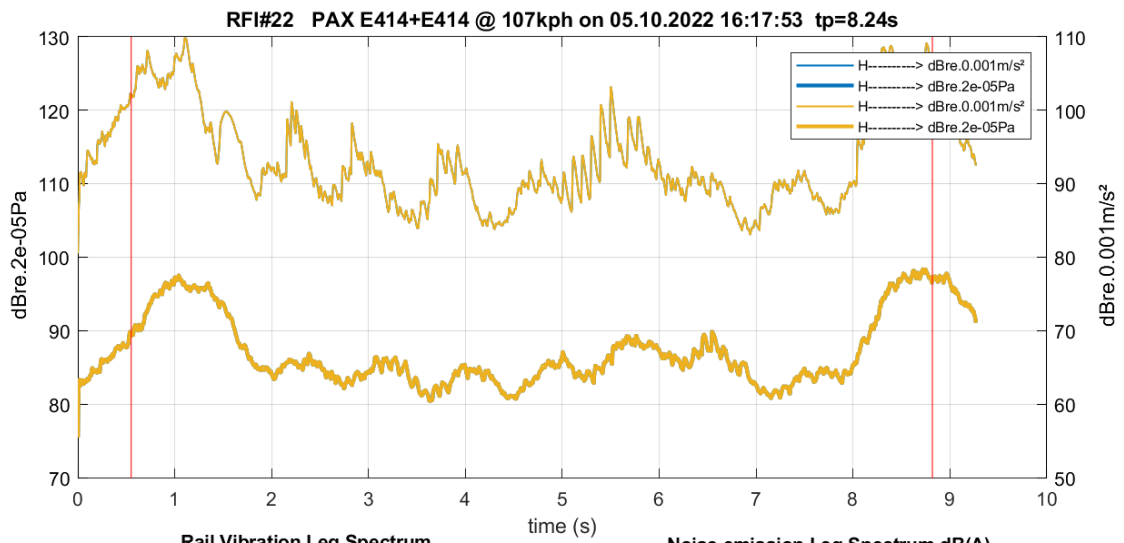


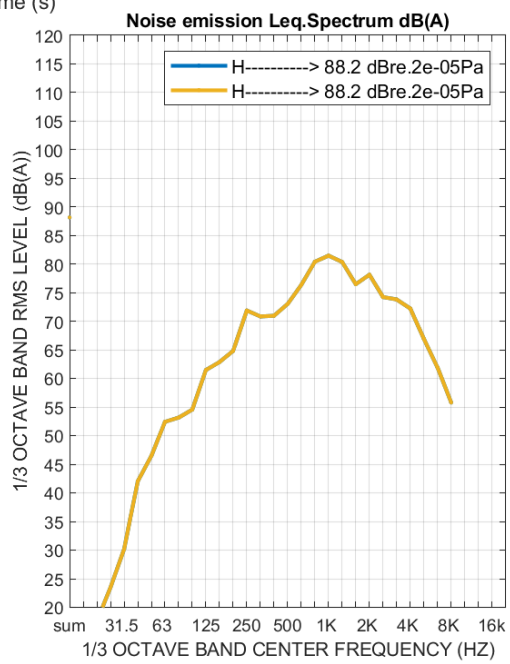
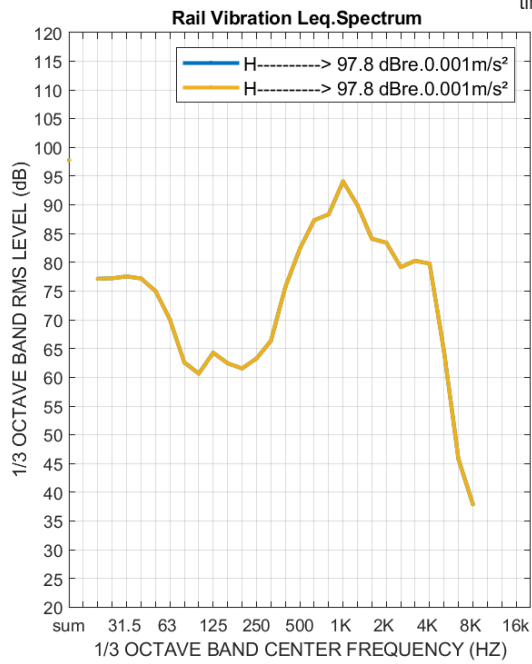
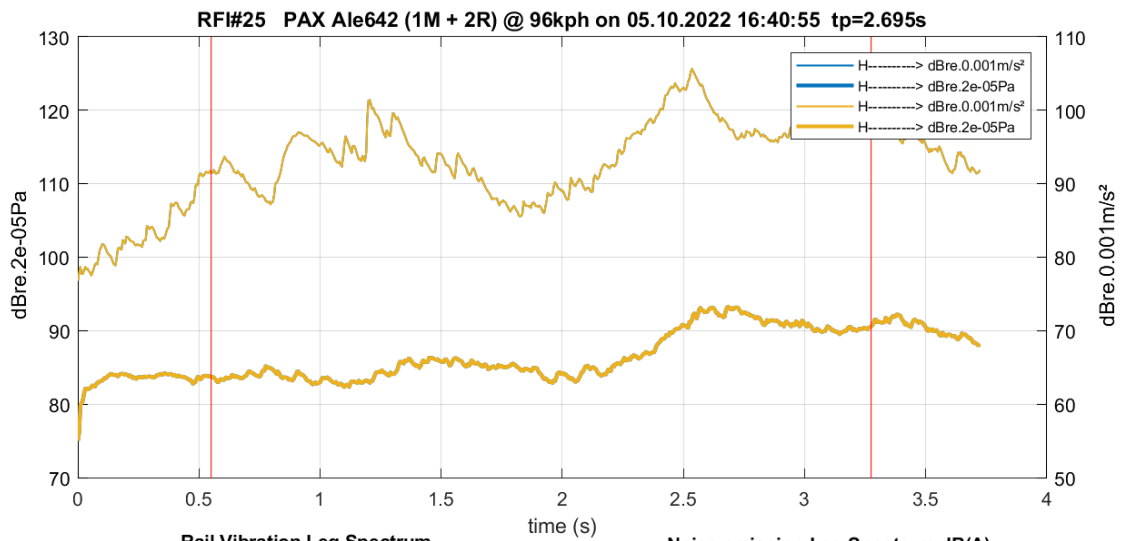


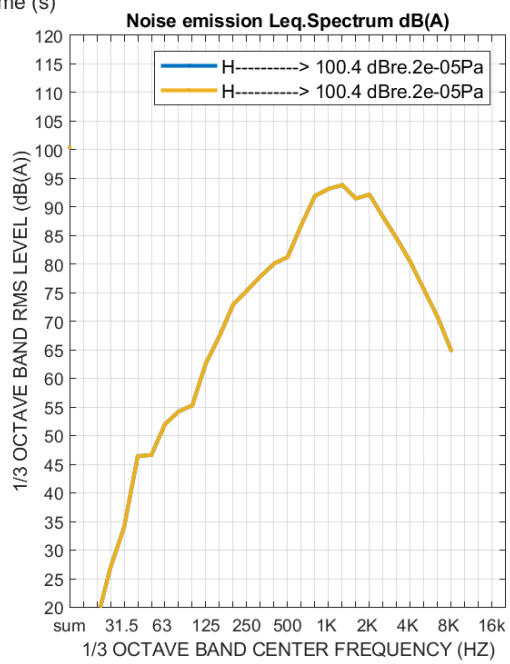
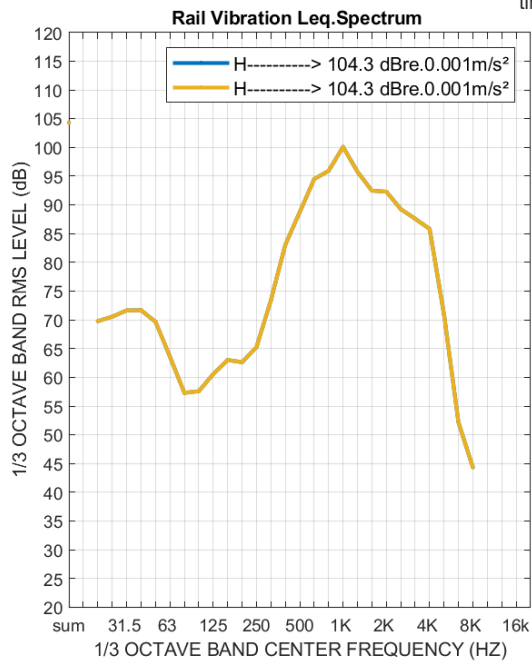
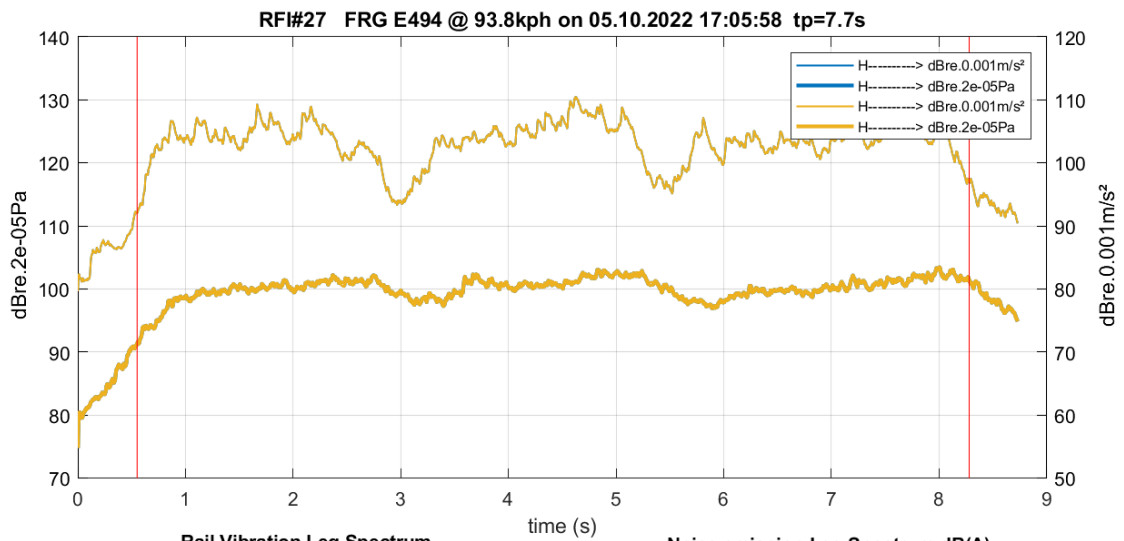


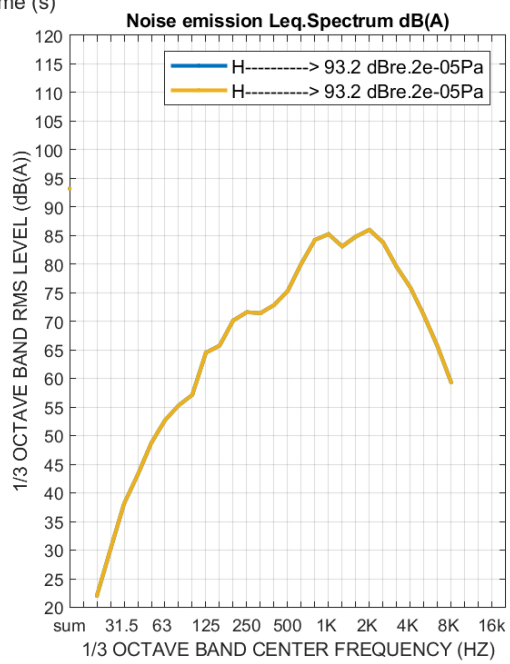
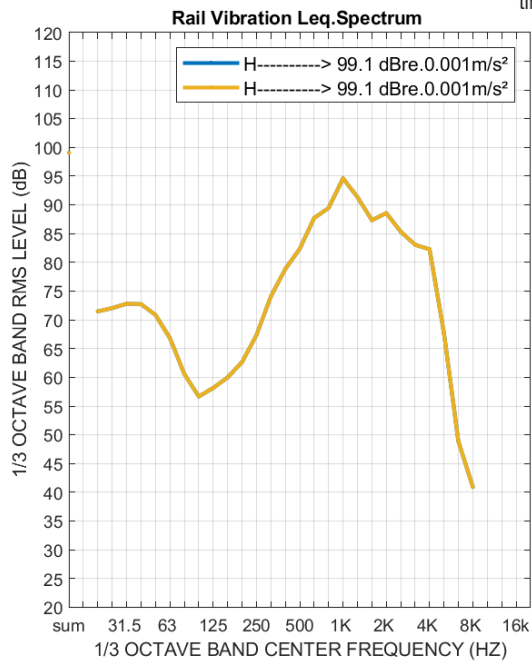
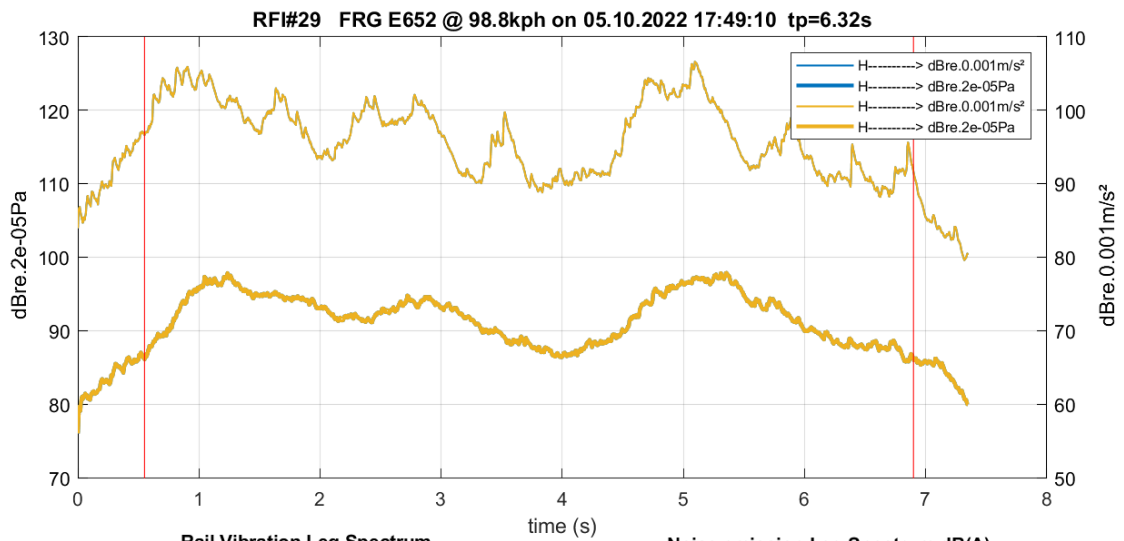


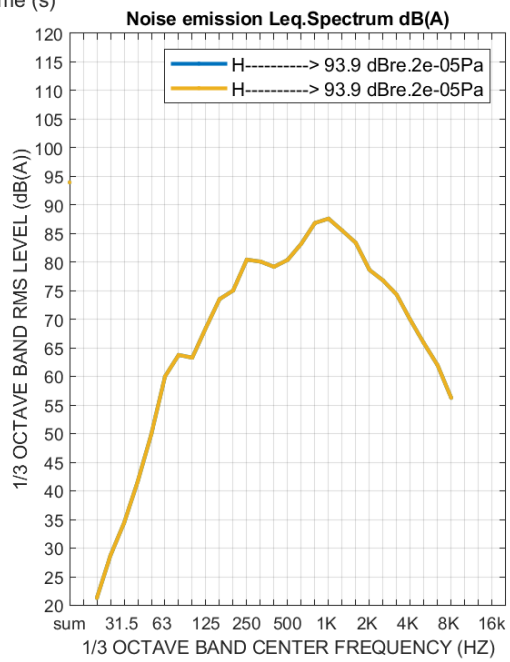
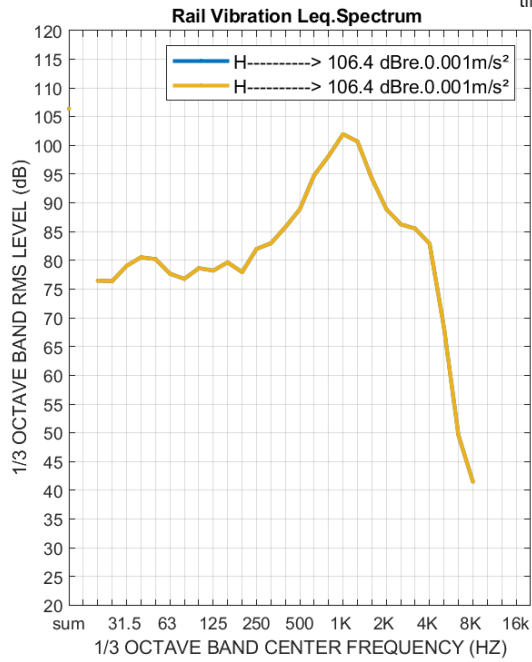
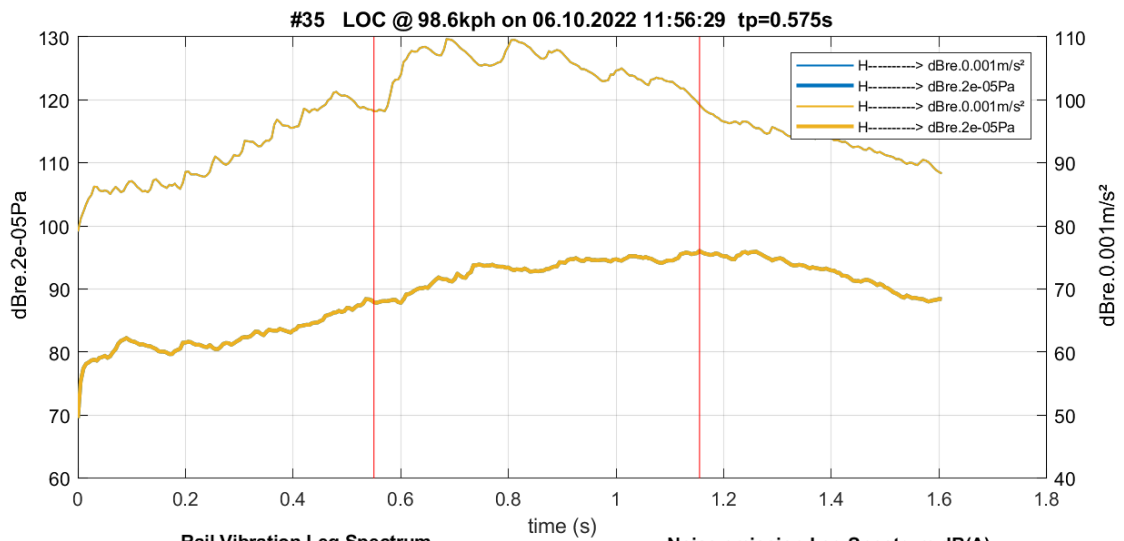


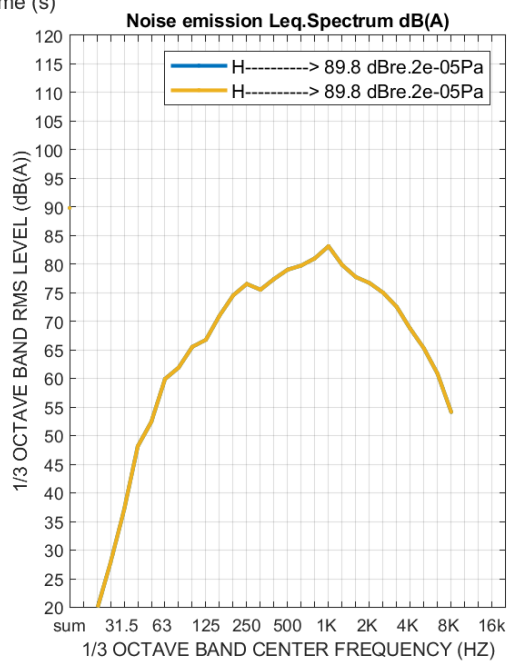
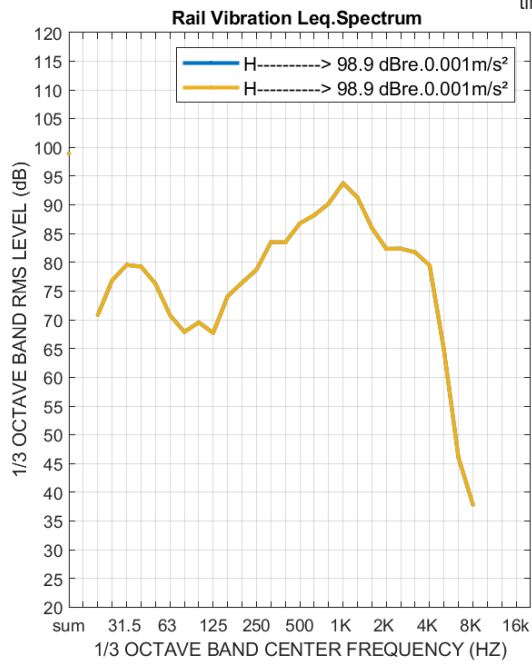
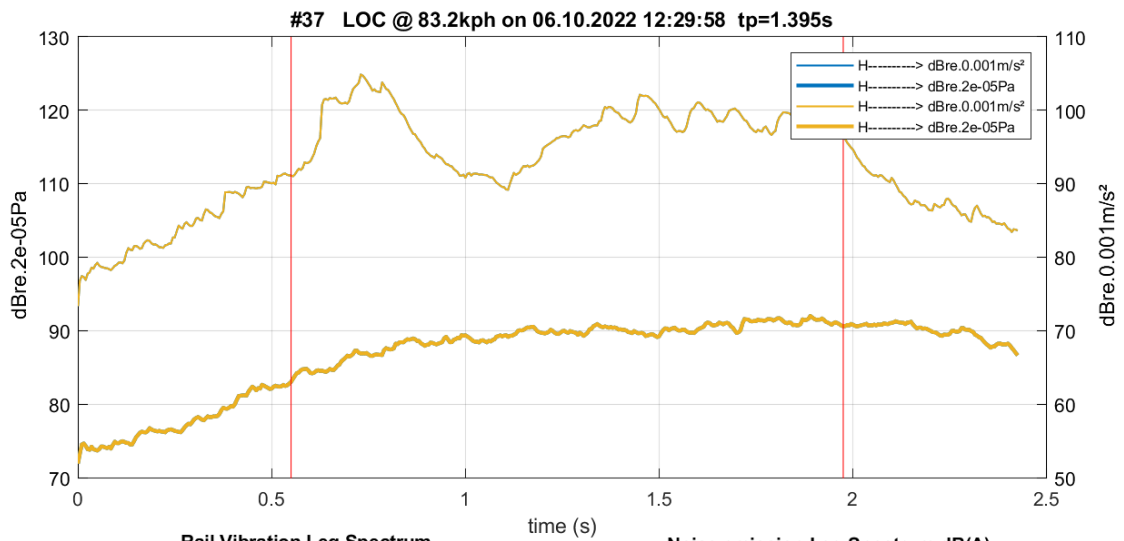


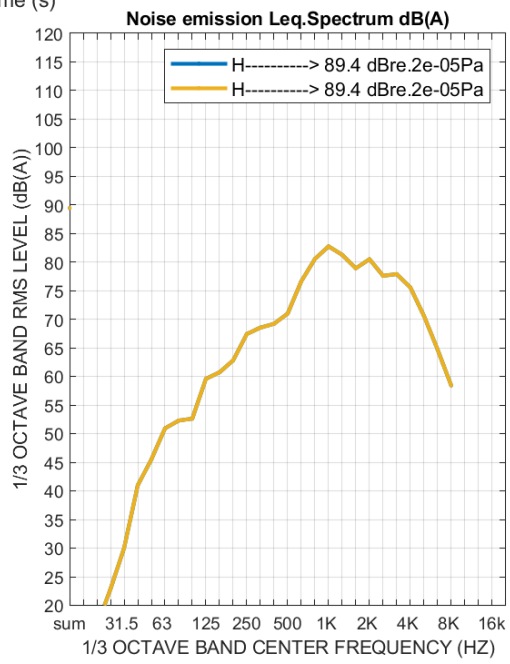
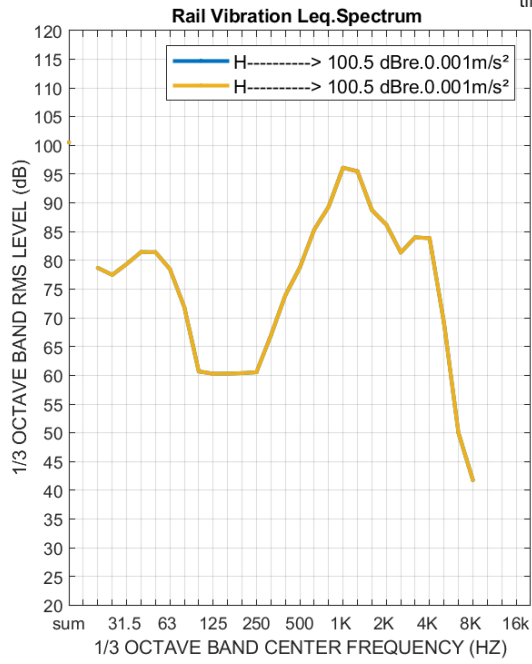
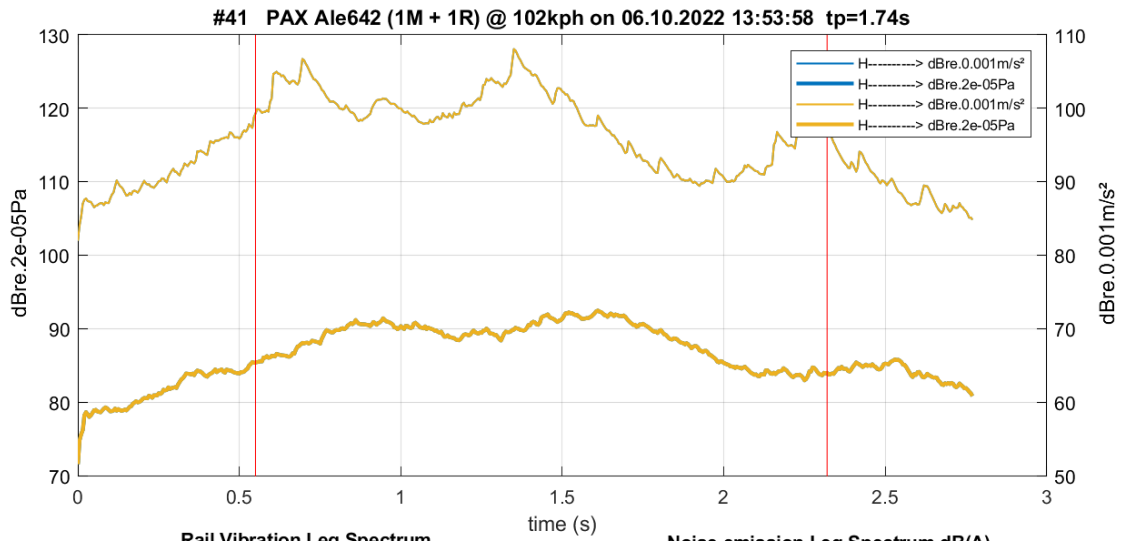


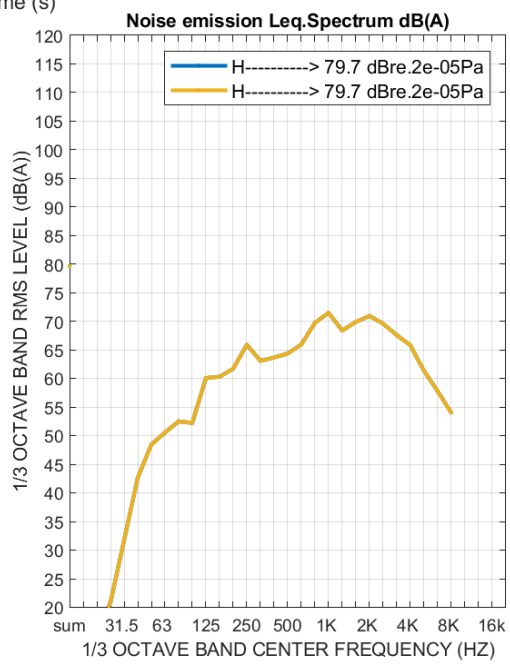
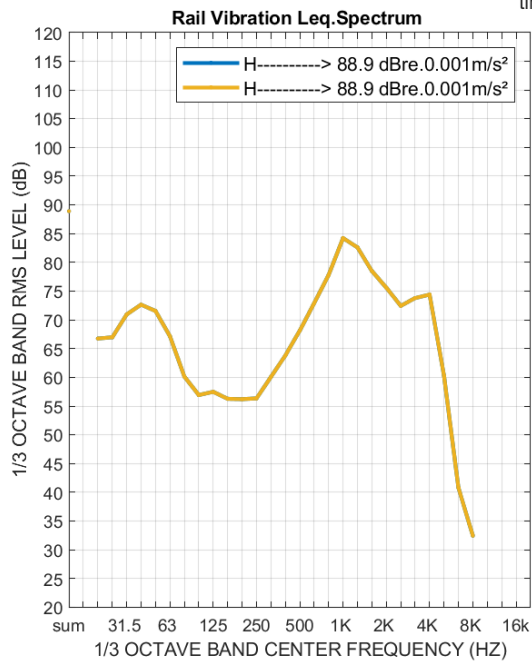
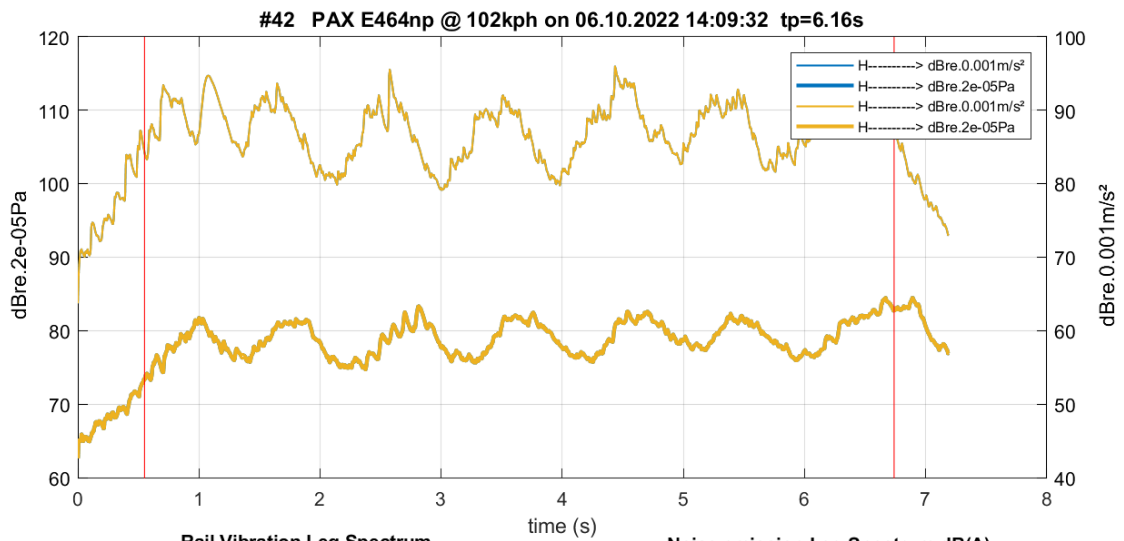




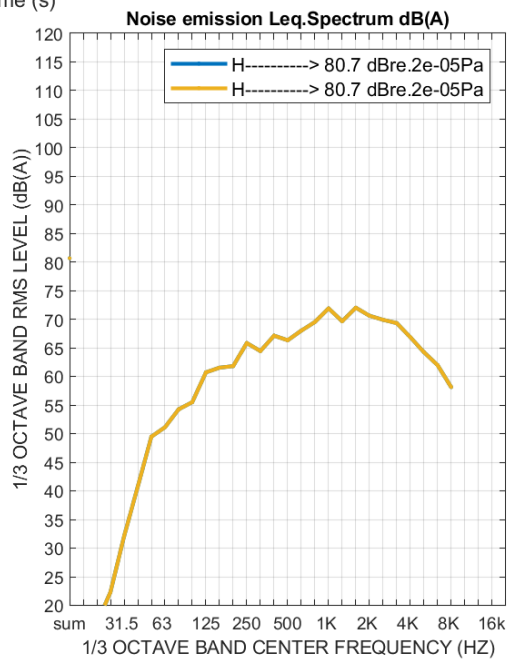
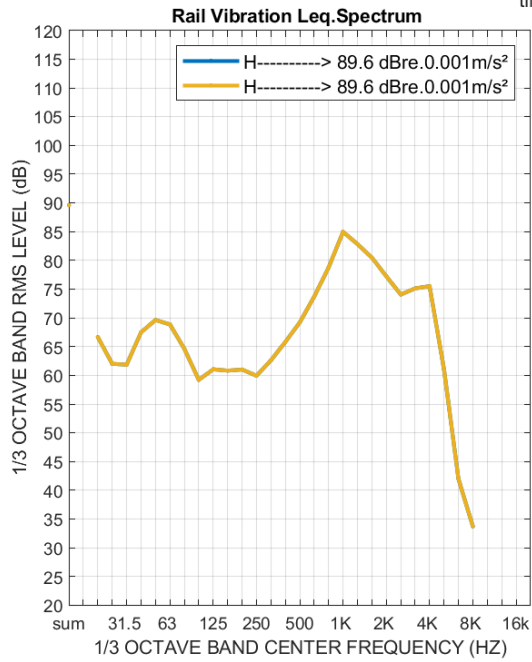
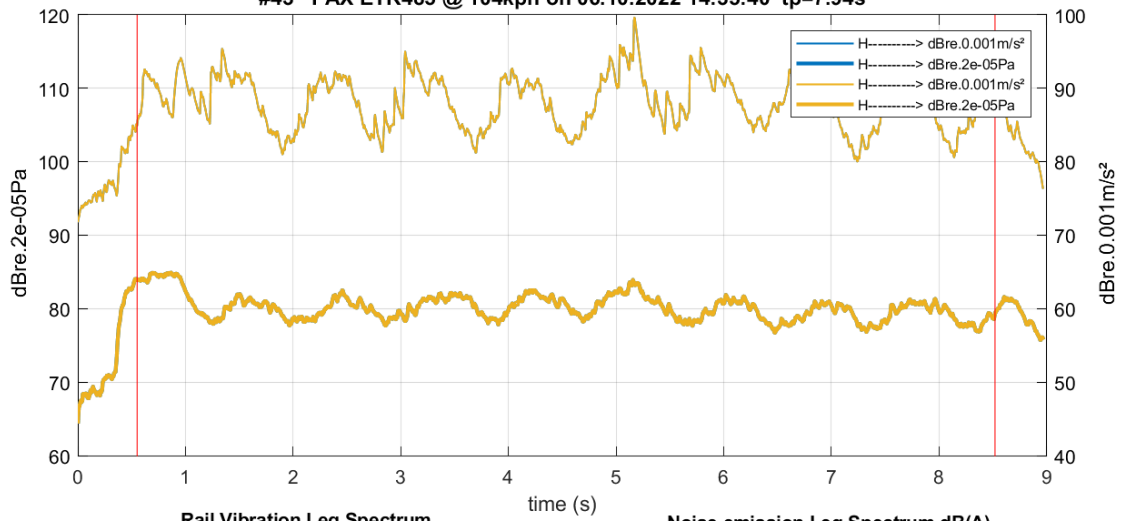


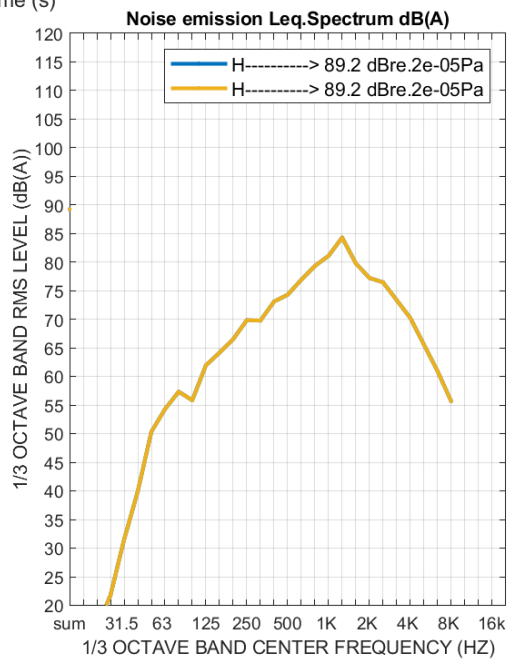
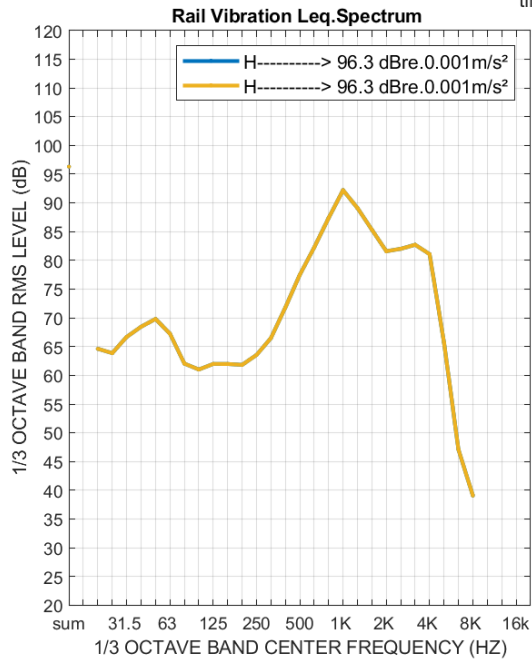
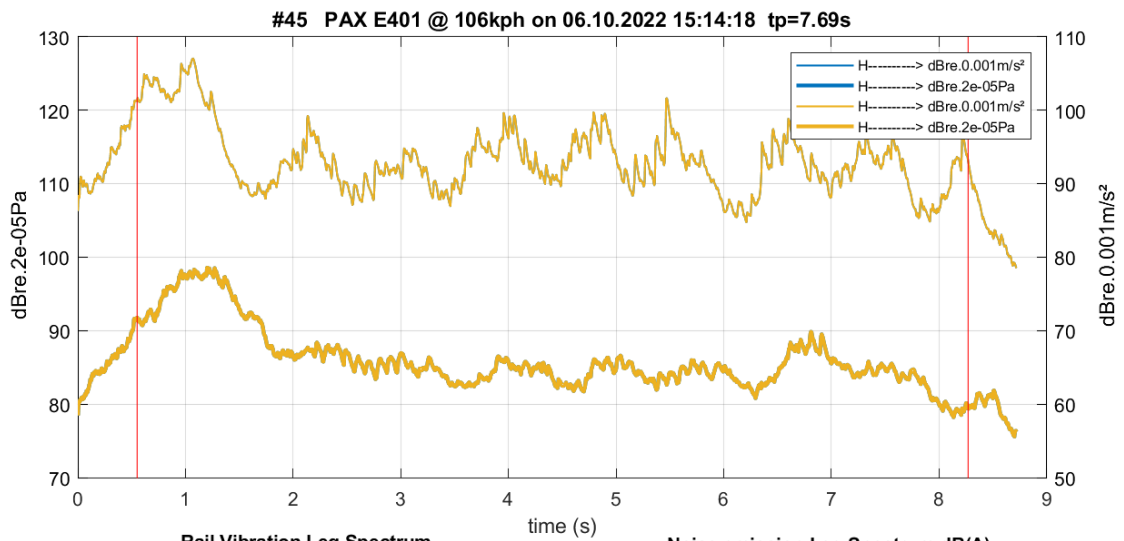


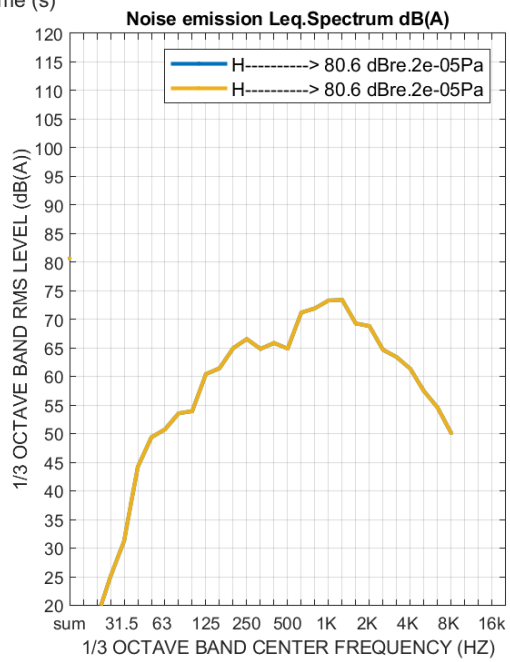
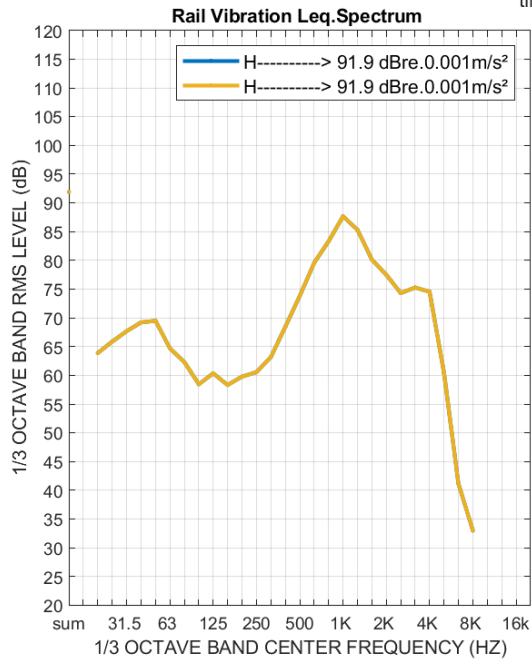
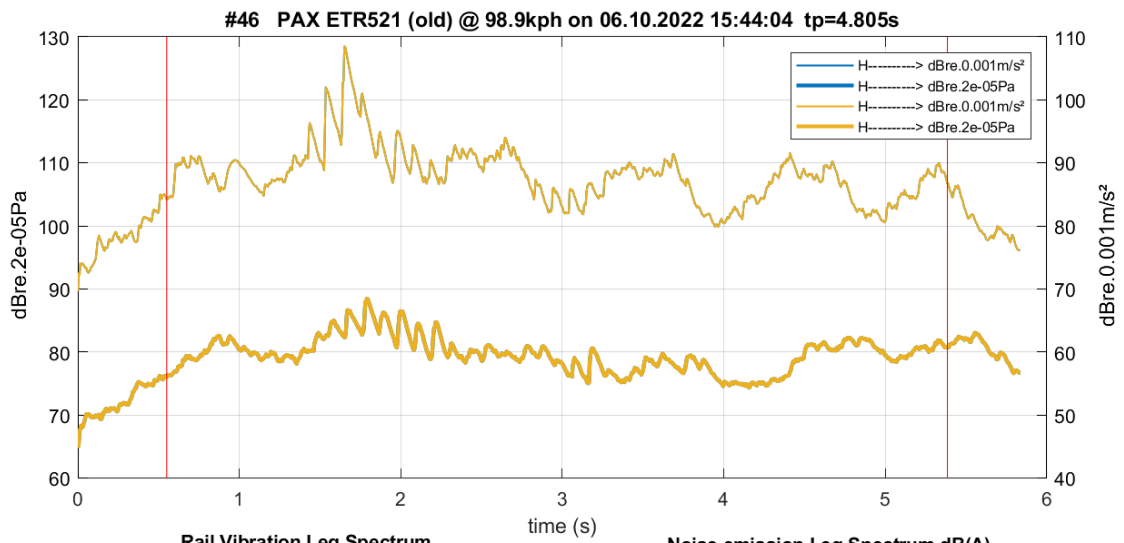


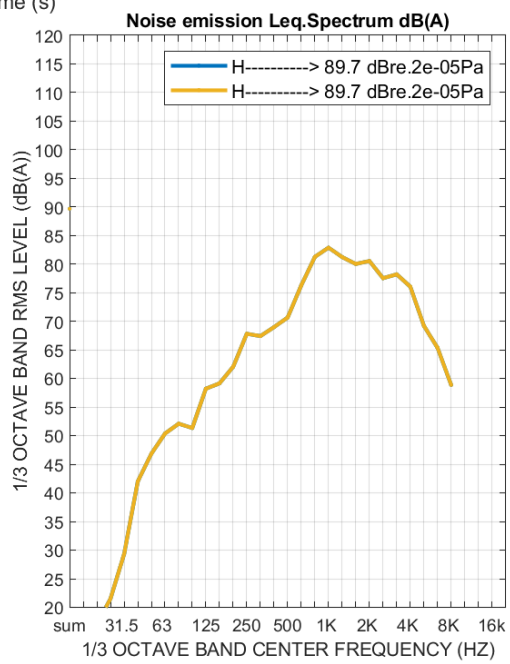
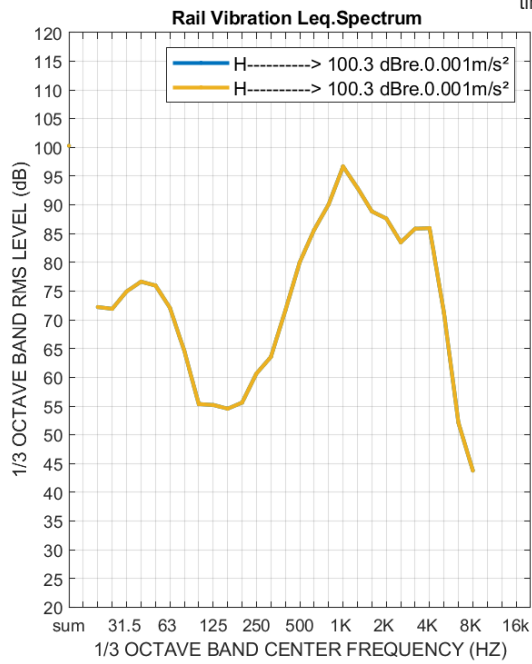
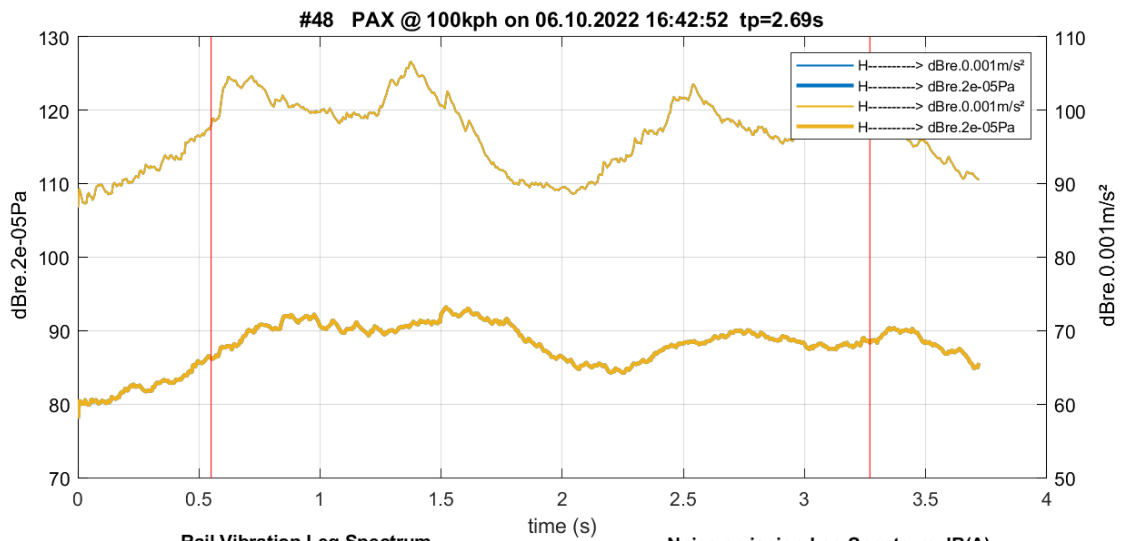


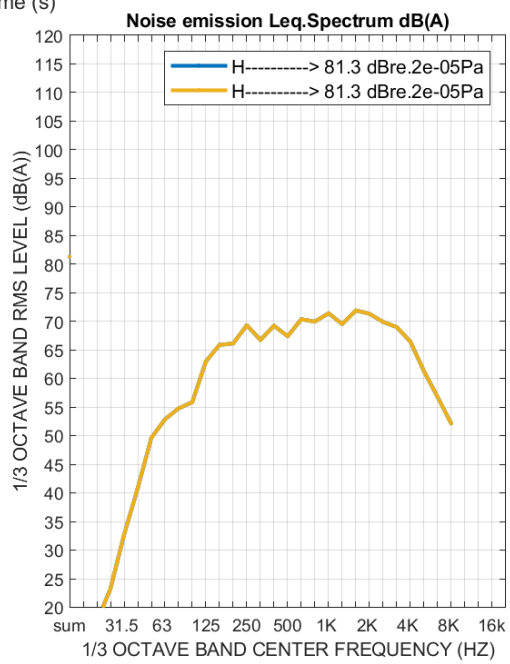
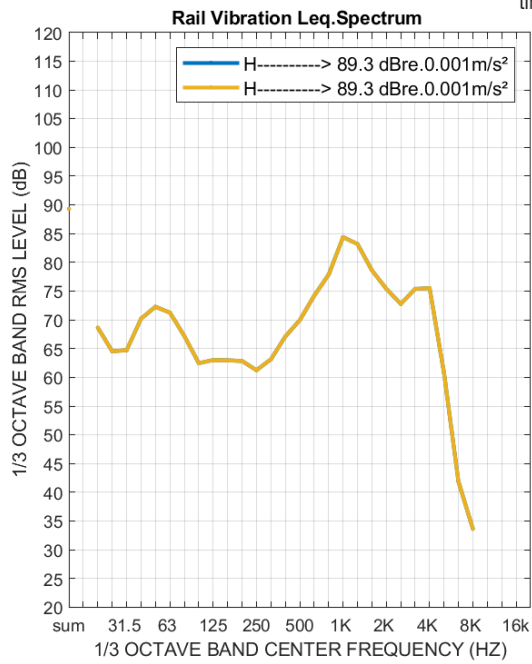
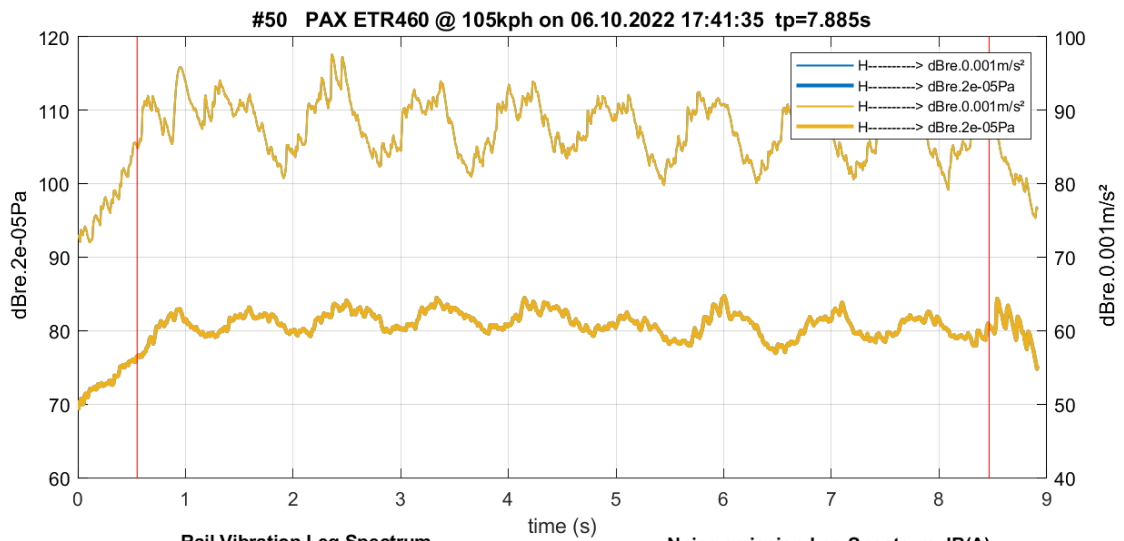
#43 PAX ETR485 @ 104kph on 06.10.2022 14:35:40 tp=7.94s

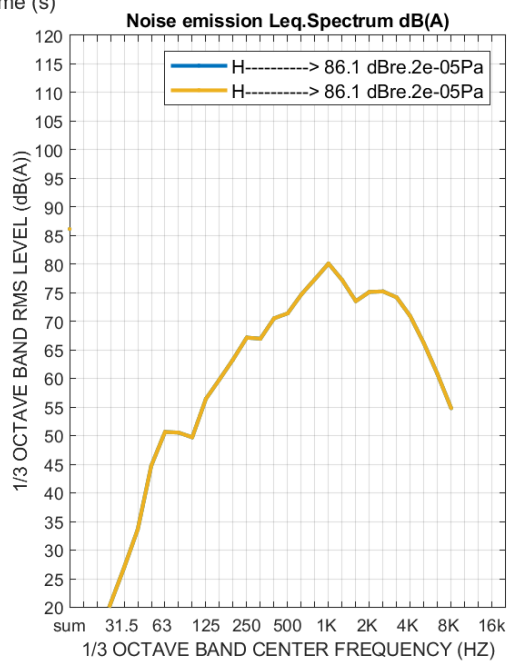
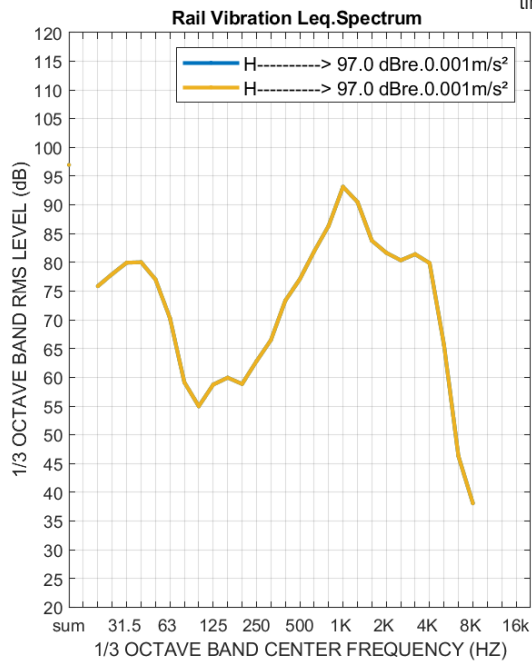


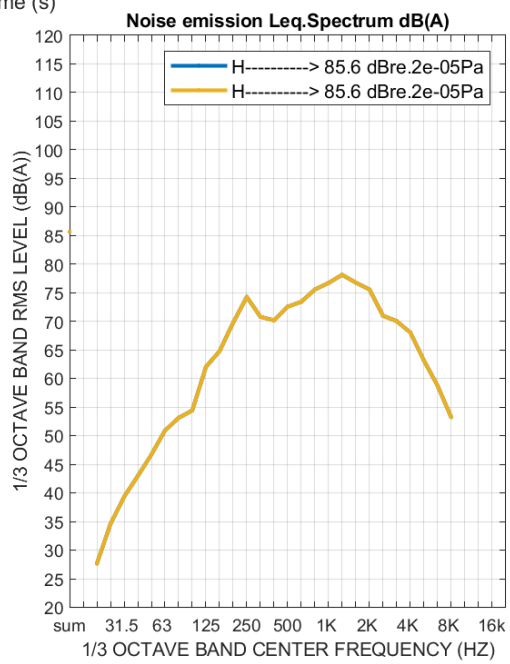
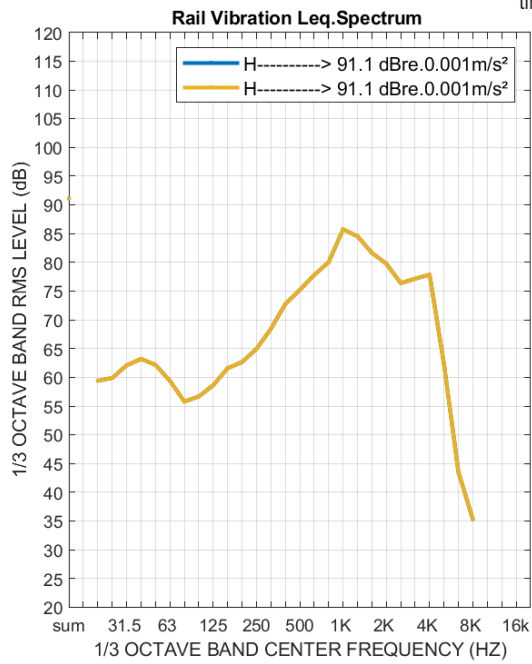
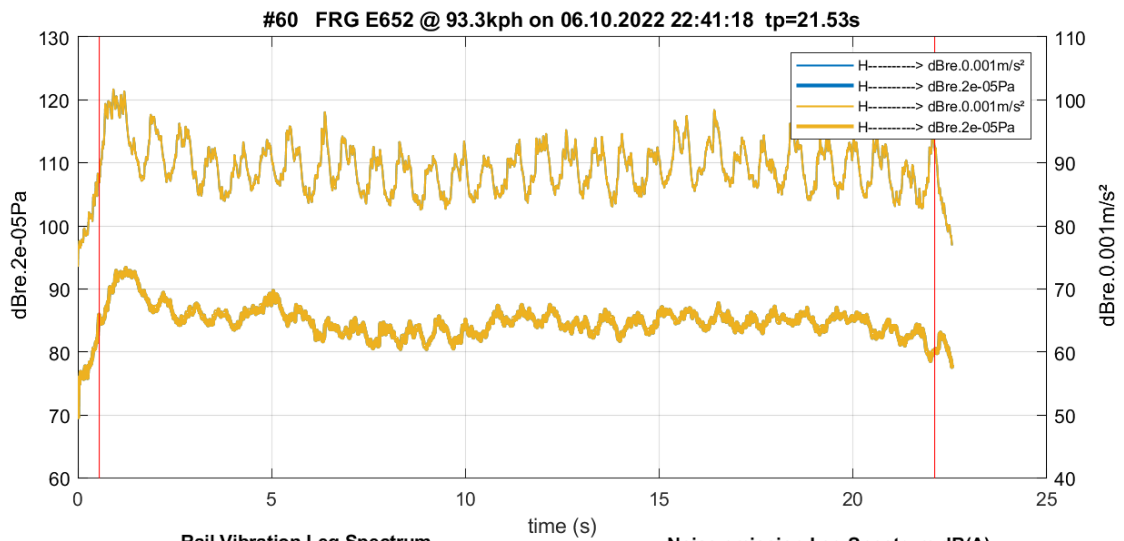


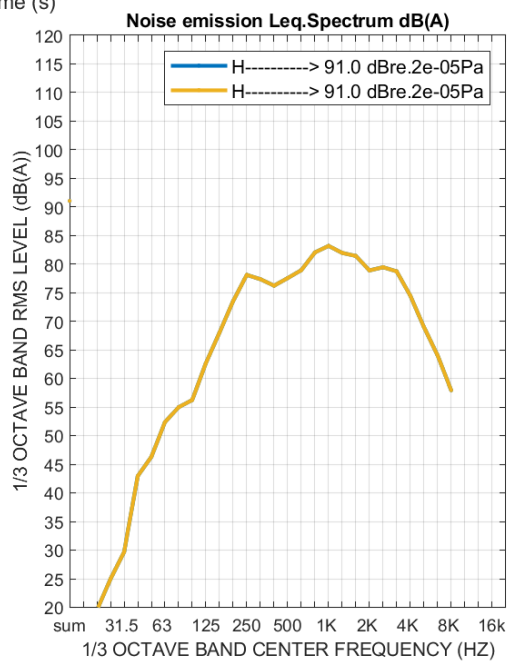
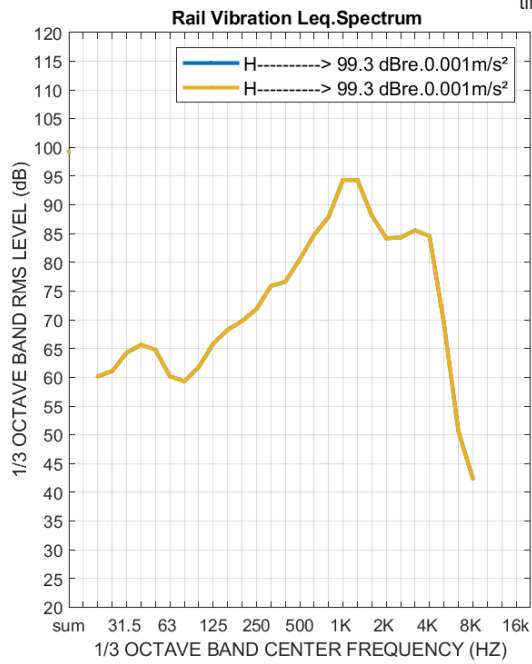
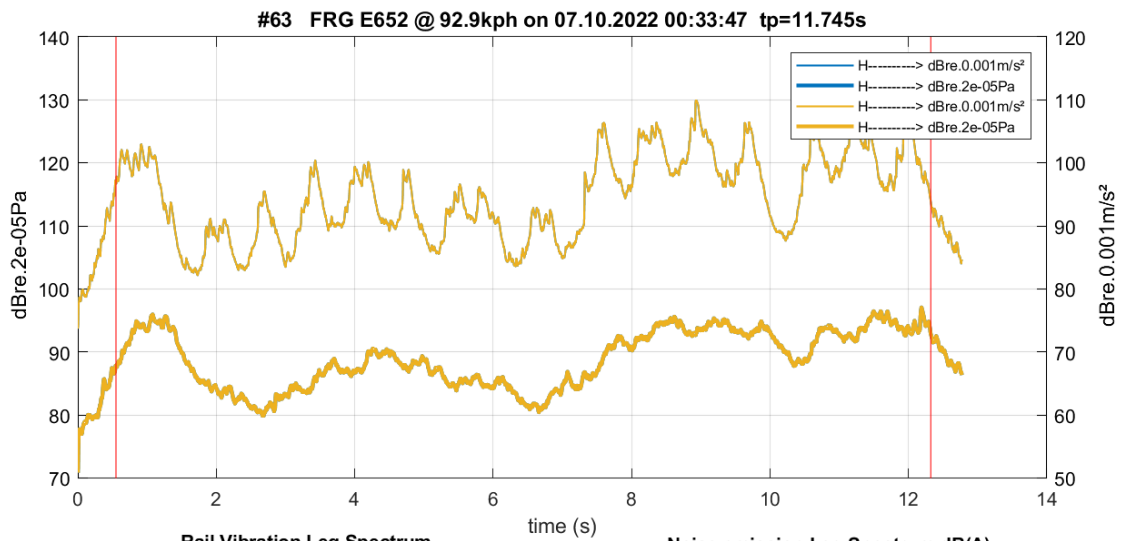


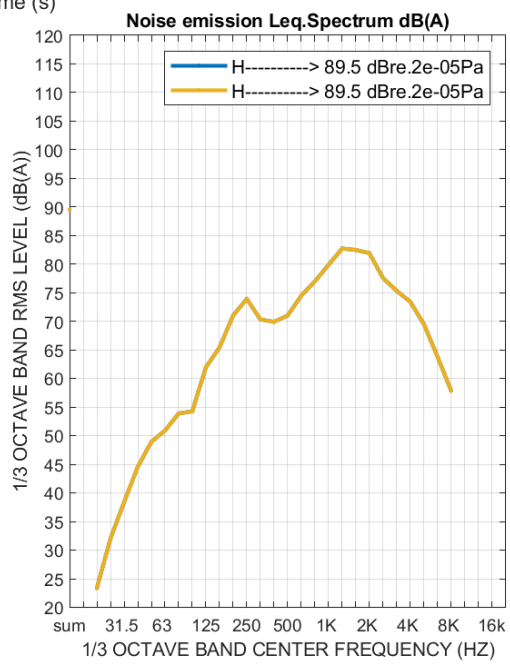
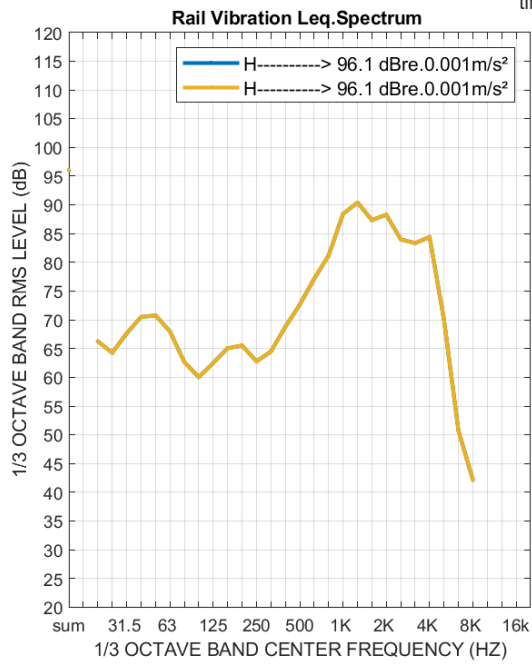
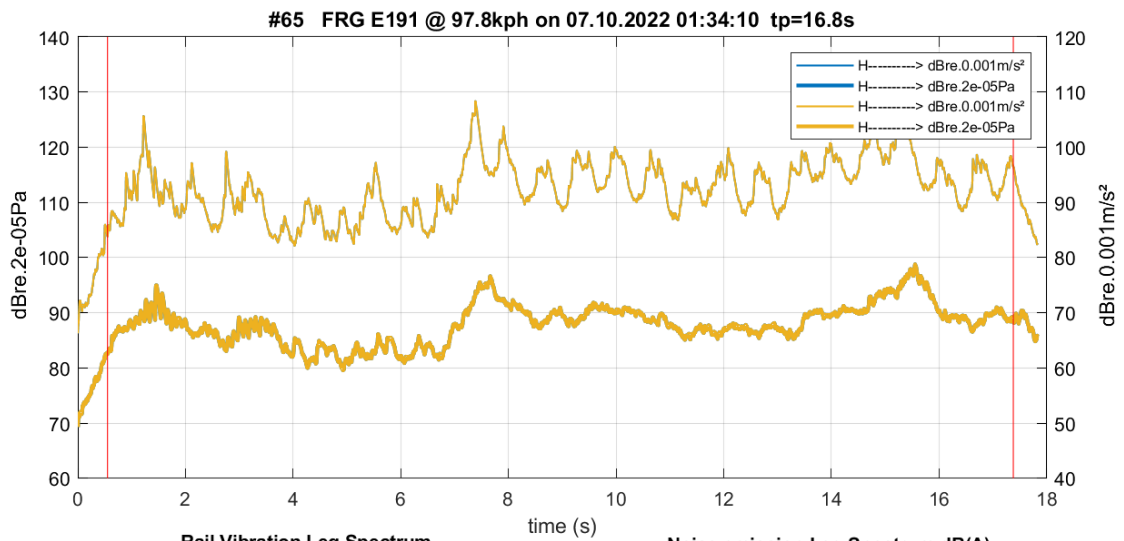


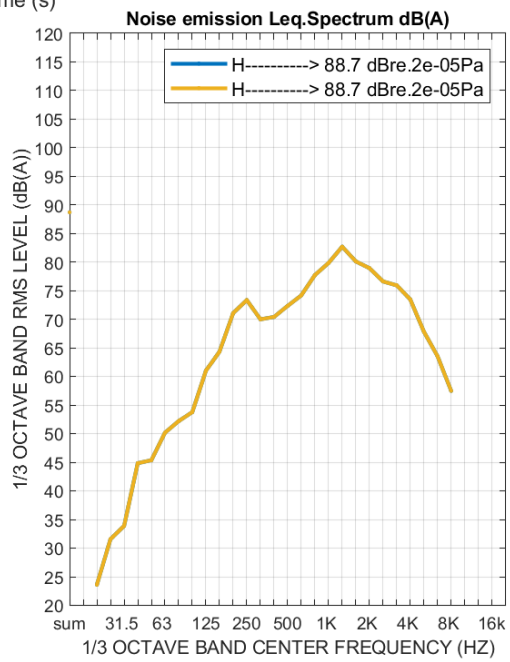
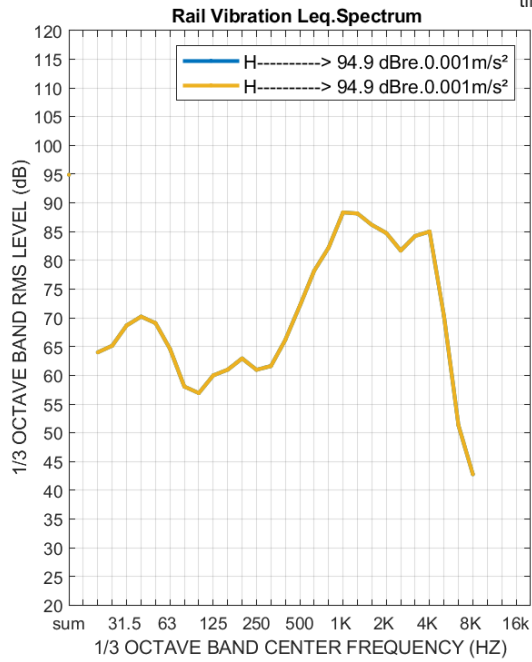
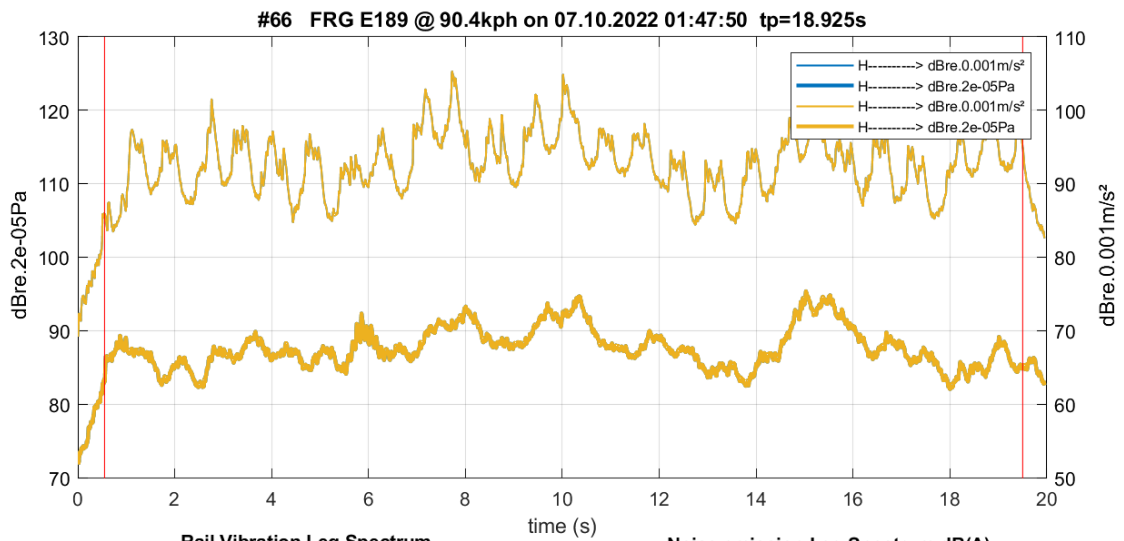












INTERNATIONAL UNION OF RAILWAYS
16, rue Jean Rey - 75015 Paris - France
Tel. +33 (0)1 44 49 20 20
Fax +33 (0)1 44 49 20 29
E-mail: info@uic.org

Published by: UIC Sustainability
Directors of publication: Pinar Yilmazer, Lorenzo Franzoni
Cover and layout: Ludovic Wattignies
Photo credits: DB AG, Infrabel
Printing: UIC

ISBN 978-2-7461-3335-8
Copyright deposit: October 2023

www.uic.org



#UICrail

